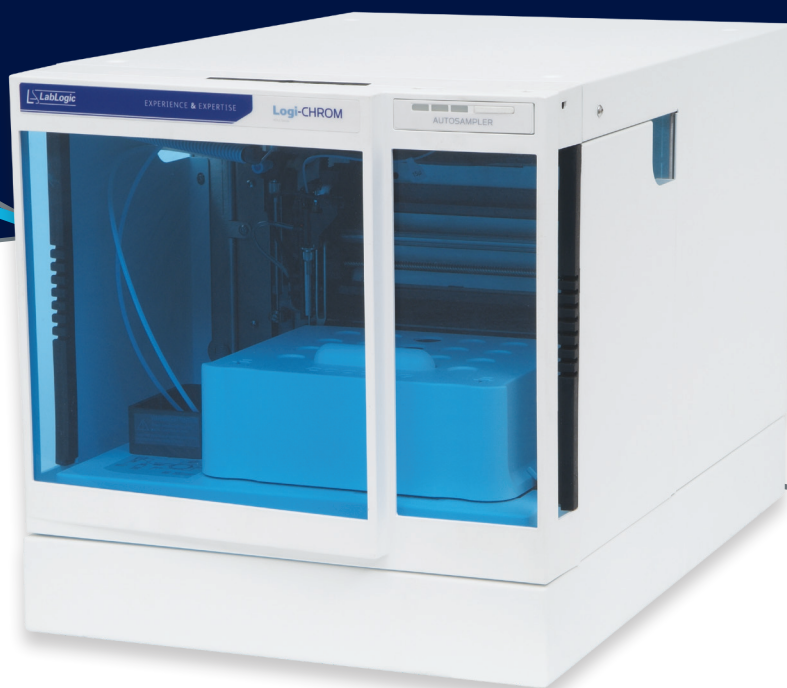


Specification Datasheet

Logi-CHROM

Auto Sampler



Logi-CHROM Auto Sampler

Auto Sampler Flow Path	Analytical
Maximum Back Pressure	862 bar
Vial / Plate Dimensions	Max. plate / vial height: 47 mm (incl. septa or capmat)
Injection Volume Range	0.1 µl - 10 ml depending on sample loop
Sample Loop	100 µl
Dispenser Syringe	250 µl
Headspace Pressure	Built-in compressor, only for sample vials with septum
Switching Time Injection Valve	< 100 ms
Piercing Needle Precision	± 0.6 mm
Sample Tray Cooling	None
Vial Detection	Missing vial / well plate detection sensor
Needle Wash	Programmable: Wash between injections and wash between vials
Wetted Materials	Tefzel® (ETFE), Glass, Teflon® (PTFE), Kel-F® (PCTFE), Stainless steel, PEEK, Vespel

Analytical Performance

Injection Modes	Full loop filling, partial loop filling and microliter pickup; PASA™ (pressure-assisted sample aspiration)
Injection Precision	RSD (Relative Standard Deviation): full loop injection mode RSD is < 0.3%, partial loop injection mode at injection volume of > 5 µl RSD is < 0.5%, microlitre pickup injection mode at an injection volume of > 5 µl RSD is < 1.0%
Sample Carryover	< 0.01% under typical conditions using needle wash; < 0.005% under special conditions with extended needle wash
Injections Per Vial	Max, 9 injections
Injection Cycle Time	Minimum 7 s from the same vial, 14 s from different vials; < 60 s for > 100 µl sample injection in all injection modes, including 300 µl needle wash
Analysis Time	Max. 9 h, 59 min., 59 s

Communication

Inputs	2 programmable TTL inputs (next injection, freeze, stop)
Outputs	1 programmable relay output (inject marker, auxiliary, alarm)
Control	Laura Software
Interfaces	LAN

Technical Parameters

Ambient Conditions	Temperature Range: 10 - 40°C; 50 - 104°F. Air Humidity: 20 - 80%
---------------------------	--

General

Power Supply	95 - 240 V AC
Dimensions	377 x 300 x 510 mm (W x H x D)
Weight	30 kg

Europe & Worldwide

LabLogic Systems Limited

Paradigm House, 3 Melbourne Avenue
Broomhill, Sheffield, S10 2QJ, UK

E-mail: solutions@lablogic.com

Tel: +44 (0)114 266 7267

Fax: +44 (0)114 266 3944

www.lablogic.com

USA & Canada

LabLogic Systems, Inc.

1911 N US HWY 301, Suite 140
Tampa, FL 33619, USA

E-mail: solutions@lablogic.com

Tel: +1-813-626-6848

Fax: +1-813-620-3708

www.lablogic.com

