



# Spec-RAM CZT™

Benchtop Gamma Spectrometry System

[www.lablogic.com](http://www.lablogic.com)

 **LabLogic**  
EXPERIENCE & EXPERTISE

# A benchtop gamma spectrometer with GMP compliant software

Designed for radionuclidic identity and radionuclidic purity measurements, the SPEC-RAM CZT™ offers a cost-effective alternative to High Purity Germanium (HPGe) detectors, making it the ideal solution for medical radioisotope producers, radiopharmacies, and research facilities when identifying any impurities or contaminants present in a sample.

## Ease of use

### The alternative solution to HPGe

The Spec-RAM CZT™ offsets the disadvantages of larger, costly, more hazardous HPGe systems while still delivering the necessary resolution for the Quality Control measurements of PET and SPECT radiotracers. Perfect for existing facilities which do not have the space, infrastructure, funding, or skillset to operate a HPGe.

### Simple software platform

Laura Radiopharma™ can be used to control a range of equipment in your QC lab including radio-TLC, radio-HPLC, GC's and many more. This approach provides consistency in use and reporting, whilst reducing training and validation efforts.

## High performance

### Improved energy resolution

Cadmium Zinc Telluride (CZT) detectors are highly sensitive to gamma rays – due to the high atomic numbers of Cd and Te – and provide an energy resolution (FWHM) of  $\leq 2.5\%$  compared to traditional scintillator detectors.

### Ideal for ambient temperature measurements

CZT detectors can operate in direct-conversion (or photoconductive) mode at room temperature, unlike Germanium which requires cooling.

### Energy and efficiency calibration

Laura Radiopharma™ software includes all the key gamma spectrometry features including both energy and efficiency calibrations.

## GMP Compliant System

### GMP compliant software for gamma spectrometry

Like all LabLogic instrumentation, the Spec-RAM CZT™ is controlled by Laura Radiopharma™, our industry-standard software for instrument control that is compliant with global regulations such as FDA 21 CFR Part 11 and EU Annex 11.

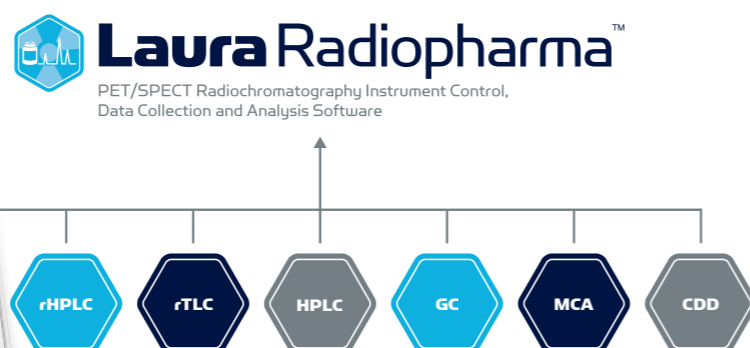
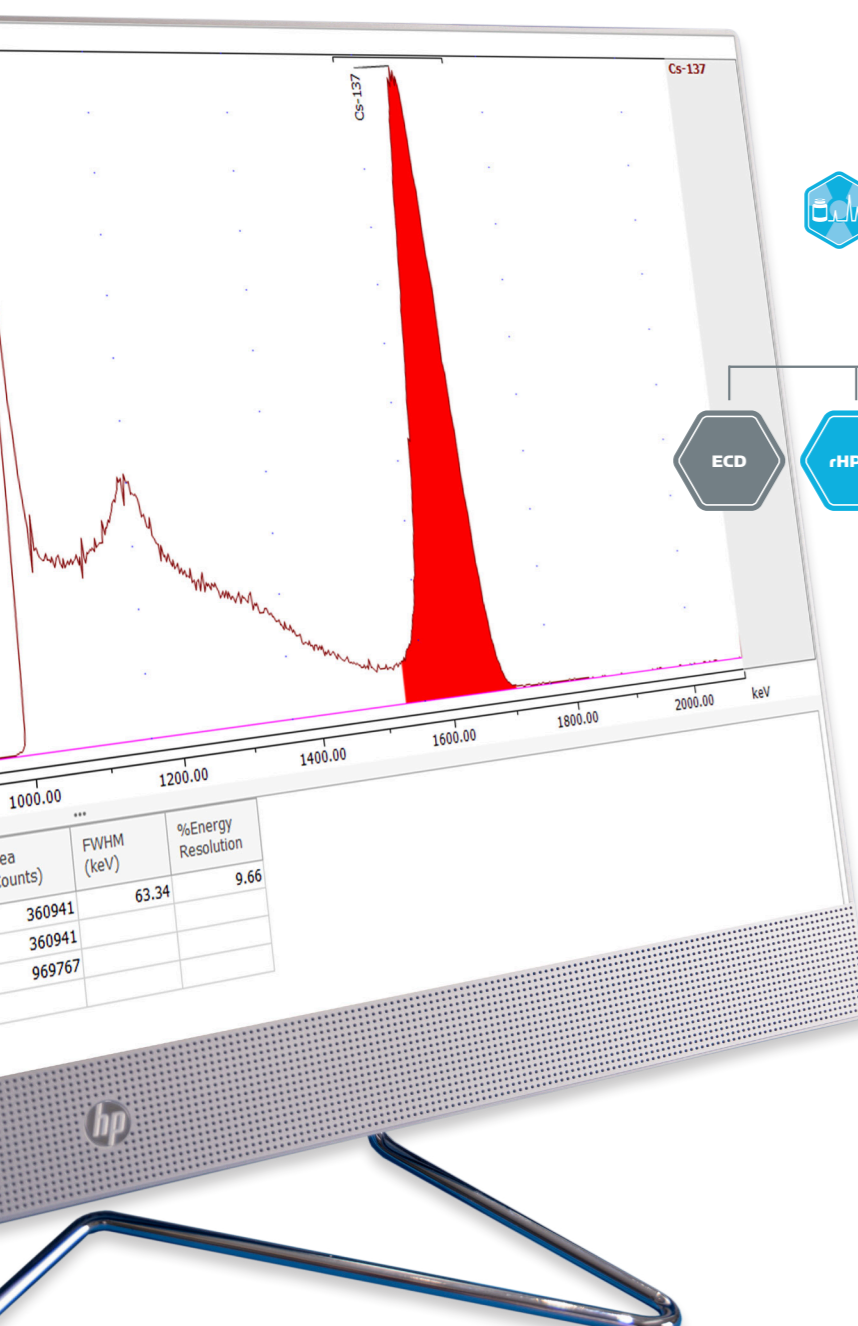
The introduction of compliant software to gamma spectrometry facilitates easier validation for sites while improving workflow efficiency.

Features include:

- Full audit trail.
- User defined access levels.
- Electronic signatures.
- Secure database.
- Multi-level security.

### Maintaining data integrity

Laura Radiopharma™ is seamlessly integrated into LabLogic's LIMS such as PETra™ and SPECTra™, allowing captured data to be instantly populated. This integration between the software packages preserves data integrity in accordance with ALCOA principles.



### Space saving

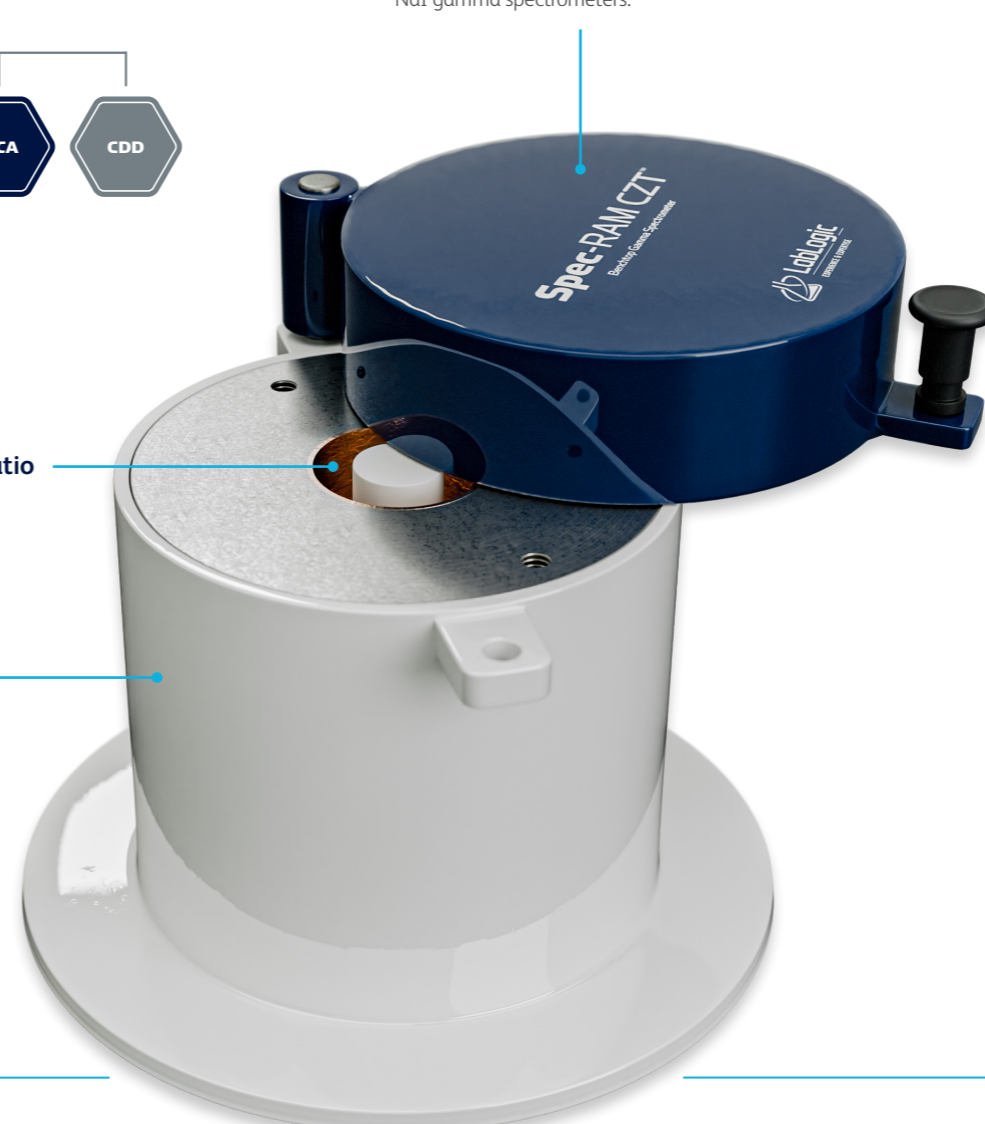
With a small footprint and reduced weight, the SPEC-RAM CZT™ can be easily mounted on a lab bench unlike HPGe and traditional NaI gamma spectrometers.

### Excellent signal-to-noise ratio

A copper liner eliminates Compton Scattering, ensuring an excellent signal-to-noise ratio.

### Lead Shielding

Shields the detector from background environmental radiation. Additionally, it attenuates exposure to the operator.



 Search SPECT-RAM CZT on YouTube

Specifications	
Height	27.7 cm
Diameter	24 cm
Weight	52 kg
Probe Head Dimensions	∅ 24 x 58 mm
Detector Volume	0.5 cm <sup>3</sup>
Bias Voltage	≤1500
Energy Resolution (FWHM) at 662 keV	≤2.5 %
Peak-to-Compton Ratio at 662 keV	≥4.0
Please refer to the Technical Specification Sheet for further information	

# Service and Support

Users of our systems can benefit from our comprehensive, fully inclusive service and support.

We can give reassurance that if things go wrong or you need expert advice, help is only an e-mail or phone call away.



# Validation Services

Our Validation Service enables you to implement and get maximum value from your investments as soon as possible.

We work as a partner with your Quality Manager, System Manager and users to provide a tailored Validation Plan, suited to your needs. Our Validation Specialists who have many years' of experience in GLP system validation, detailed knowledge of our systems, together with other industry standard systems to help you meet company and regulatory requirements.

# Training

LabLogic can provide a variety of training courses and workshops to help you get the most out of your instrument and software.

All training is performed by our expert Product and Support Specialists who have many years experience in the development and use of the instruments and software.

Certificates can be provided to complement your internal GLP training records.



## Europe & Worldwide

### LabLogic Systems Limited

Innovation House, 6 Europa View  
Sheffield, S9 1XH, UK

E-mail: [solutions@lablogic.com](mailto:solutions@lablogic.com)

Tel: +44 (0)114 266 7267

[www.lablogic.com](http://www.lablogic.com)



**INVESTORS IN PEOPLE**  
We invest in people Gold

## USA & Canada

### LabLogic Systems, Inc.

3901 Centerview Drive, Suite B  
Chantilly, VA 20151, USA

E-mail: [solutions@lablogic.com](mailto:solutions@lablogic.com)

Tel: +1-703-429-4209

[www.lablogic.com](http://www.lablogic.com)

