

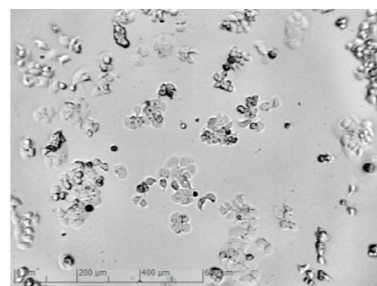
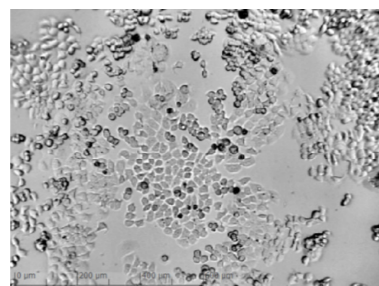
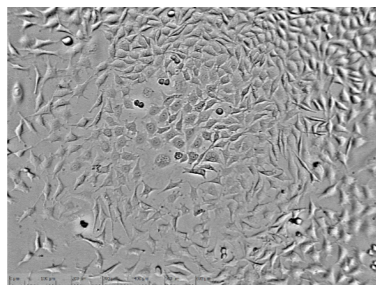
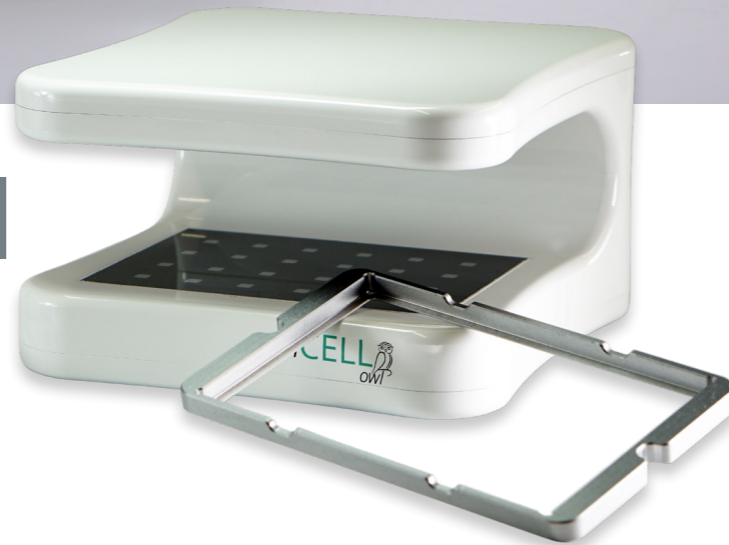
Cell Imaging and Tracking Systems

Imaging systems to suit a range of applications and budgets





zenCELL Owl



The zenCELL Owl is a 24-camera microscope for fast and automated live cell microscopy. Its compact design and stability, even above room temperature, make it ideal for the use as an incubator microscope.

The modular design allows flexible configurations to guarantee a suitable and safe analysis of biological samples.

The small footprint in the incubator leaves enough space for further cell cultures or zenCELL Owl systems.

Software

The software provides integrated image processing algorithms to support continuous **long term cell culture monitoring** and provide fast and accurate information about the current state of the sample to be observed. This includes real-time data analysis that provides information on the current cell count and confluency.

Start your project and capture the images of your cell culture at your individual frequency, create a time-lapse video and export a data set for your scientific work.

Applications for your cell culture include:

- Documentation and determination of cell growth.
- Determination of cell confluency.
- Analysis of drug effects on cell culture (e.g. cytotoxicity tests).
- Biocompatibility testing.
- Observation and QC of stem cells.
- Migration assays.

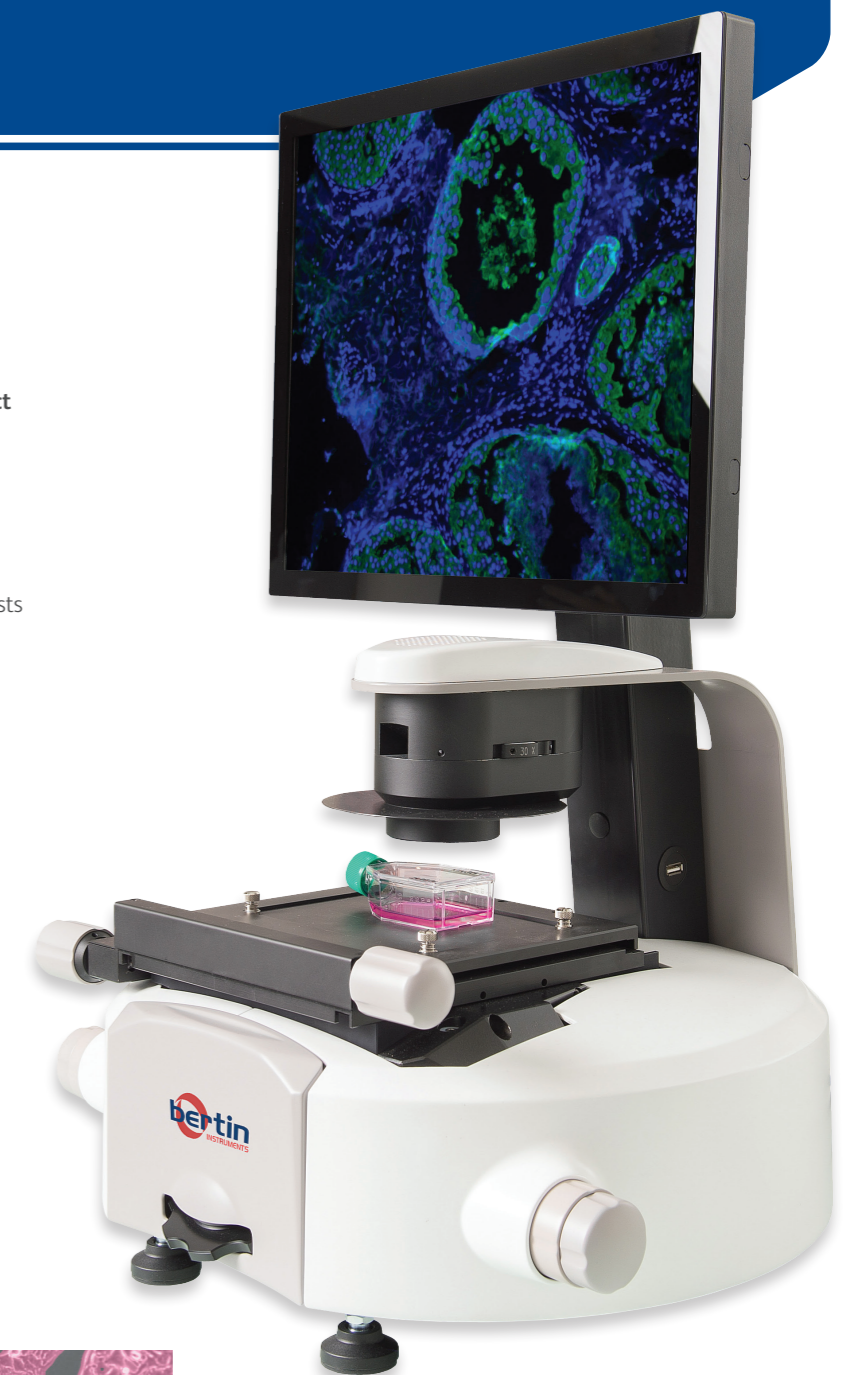
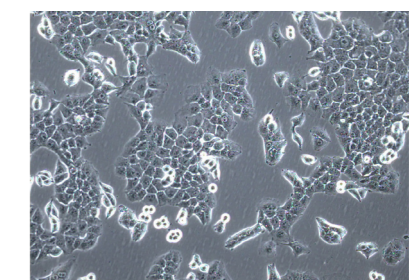
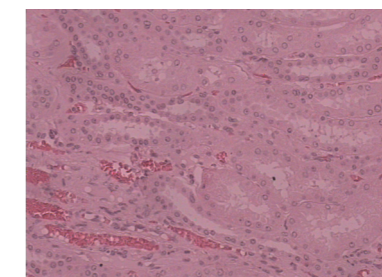
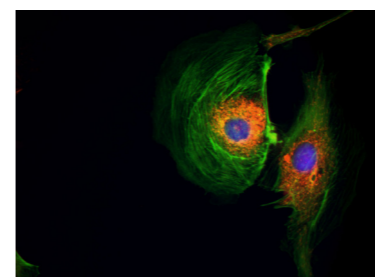
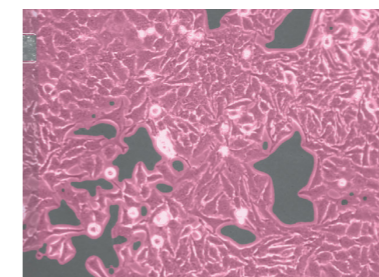
InCellis

Providing coloured imaging in brightfield, phase contrast and fluorescence, the InCellis is the perfect instrument to produce publication quality images of cells for both cell culture and tissue slides.

The on-board applications allow easy calculation of cell confluency, cell transfection and cell counting in just a few seconds.

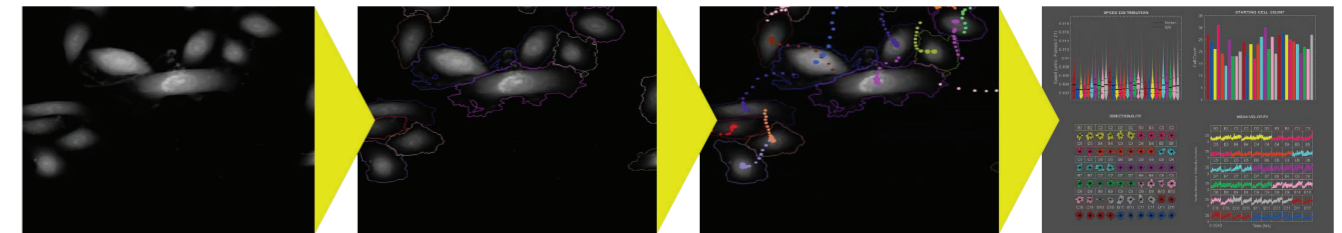
With the flexibility and efficiency of the InCellis, biologists can easily qualify samples for further analysis.

- **No dark adaptation needed** – fluorescent images can be taken in ambient lighting.
- **High sensitivity** – The Low Light CMOS sensor with licensed Kameleon technology detects low intensity fluorescence and provides the highest sensitivity for the user.
- **User friendly interface** – A wipe-down touchscreen interface makes the InCellis incredibly efficient to use. It is designed to require minimal training to use, and all settings are easily adjustable.
- **Flexibility** – With 6 positions for the objective turret and up to 4 fluorescence channels that can also be overlaid, the InCellis provides the highest flexibility for the user.
- **Embedded applications** – The intuitive software and embedded applications allow easy and automatic calculation of cell within your sample.
 - Automatic Cell Count
 - Transfection Efficiency
 - Transfection Surface
 - Confluency
 - Cell Measurement
 - Cell Viability





This means you can eliminate the constraints of photo-induced behaviour to produce comprehensive cell profiling.



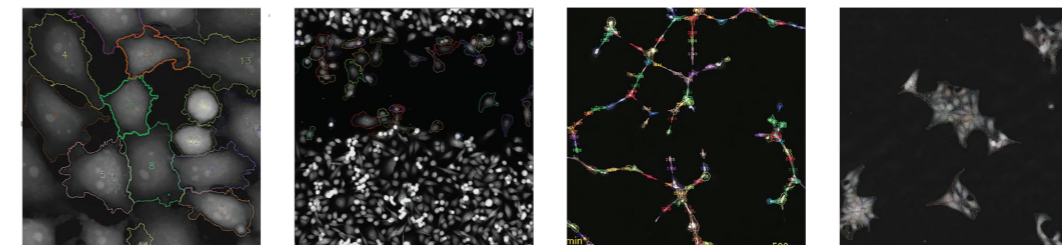
Label-free, high contrast information rich images

Confident and robust segmentation of cells.

Automatically tracks cells by linking every cell in every frame.

Multi-parametric description of cell behaviour.

- Up to **7 fluorescence channels** provides a wide range of compatibility with fluorescent labels.
- Multiscale data analysis and visualisation means you can explore assay outputs from a whole-plate view down to individual cell metrics and lineage trees. This makes Liveocyte suitable for a wide range of applications including:



Oncology

Wound Healing

Angiogenesis

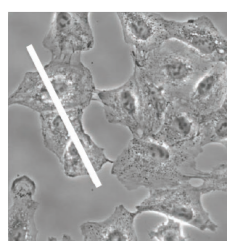
Stem Cells

- The user friendly interface allows you to quickly uncover phenotypic differences with easy-to-use dashboards for:
 - Growth and Proliferation.
 - Motility and Migration.
 - Cell Cycle and Lineage.
 - Fluorescence Expression.

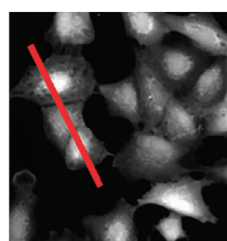
Liveocyte Kinetic Cytometer

The only instrument optimised for high-content long-term live cells assays with automated cell tracking

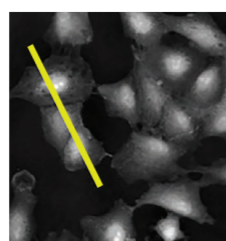
- Unique ptychographic quantitative phase imaging (QPI) mode enables a wide range of label-free assays with or without complementary fluorescence.



Phase Contrast



Fluorescence



QPI



Service and Support

Users of our systems can benefit from our comprehensive, fully inclusive service and support.

We can give reassurance that if things go wrong or you need expert advice, help is only an e-mail or phone call away.



Validation Services

Our Validation Service enables you to implement and get maximum value from your investments as soon as possible.

We work as a partner with your Quality Manager, System Manager and users to provide a tailored Validation Plan, suited to your needs. Our Validation Specialists have years of experience in GLP system validation, detailed knowledge of our systems, together with other industry standard systems to help you meet company and regulatory requirements.



Training

LabLogic can provide a variety of training courses and workshops to help you get the most out of your instruments and software.

All training is performed by our expert Product and Support Specialists who have many years experience in the development and use of the instruments and software.

Certificates can be provided to complement your internal GLP training records.

Related Products

Hidex Sense

Multi-technology Microplate Reader



Byonoy Absorbance 96

Compact ELISA Microplate Reader



Hidex 300 SL

Liquid Scintillation Counter



Hidex 600 SL

Automatic TDCR Liquid Scintillation Counter

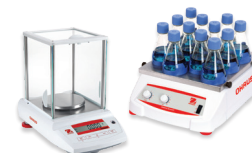


Hidex Triathler

Liquid Scintillation Counter and Gamma Counter



Routine Lab Equipment



Europe & Worldwide

LabLogic Systems Limited

Paradigm House, 3 Melbourne Avenue
Broomhill, Sheffield, S10 2QJ, UK

E-mail: solutions@lablogic.com

Tel: +44 (0)114 266 7267

Fax: +44 (0)114 266 3944

www.lablogic.com



Certificate No: 1535
ISO 9001



INVESTORS
IN PEOPLE

Silver
Until 2022

USA & Canada

LabLogic Systems, Inc.

1911 N US HWY 301, Suite 140
Tampa, FL 33619, USA

E-mail: solutions@lablogic.com

Tel: +1-813-626-6848

Fax: +1-813-620-3708

www.lablogic.com



Certificate No: 10926
ISO 9001



EXPERIENCE & EXPERTISE