

Multi-Wiper™, Multi-Wiper™ HE, Wiper™ nPhD

Nuclear Medicine & PET Gamma Counters



Nuclear Medicine Multi-Well Counter

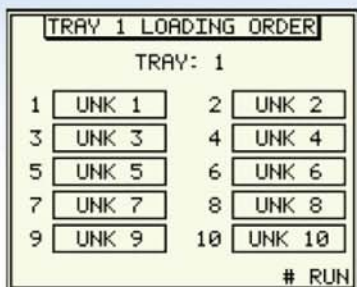
The first multi-well counters designed specifically for Nuclear Medicine

- Comprehensive wipe testing report in DPM
- Available with 1,2,3,4,5,6,8 or 10 wells
- Automatically identifies isotope window
- Pass/Fail based on user-programmable trigger levels
- Heavy shielding for low background
- 4096 channel (12 bit) analyser for precise isotope identification
- Automatic DPM calculation with AutoSpect™ (No sources needed)
- Programmed for Schilling, Plasma Volume, GFR, Red Cell Mass, etc.
- Very compact



Specification

Detectors	Well-type NaI(Tl) crystals coupled to a high gain PMT.
Analyser	4096 channels MCA, 0Kev – 1Mev range, automatic dead time correction.
Well Liner	Removable plastic well liners prevents detector contamination.
Display	LED Backlight 11.25cm LCD
Shielding	22mm virgin lead shielding with E-lead to eliminate crosstalk with high energy isotopes.
Software	Designed specifically for the Nuclear Medicine laboratory: Schilling, Plasma Volume, Red Cell Mass, GFR, CPM Counter, Comprehensive Wipe Testing.
Dimensions	1-5 well: 46cm x 27cm x 34cm. (30-34kg) 6-10 well: 51cm x 27cm x 34cm. (38-41kg)
Power	110/120 50/60hz or 220/240 50/60hz.



Wipe Test Library

Up to 16 wipe sets may be named, each with up to 10 locations per wipe set. You can even select which isotopes from the Isotope Library to look for in a particular location. Trigger levels may be set. An incredible amount of customisation is possible to make day to day wipe testing fast, simple and effective.

Isotope Library

Up to 30 different isotopes may be programmed into the Multi-Wiper™. Customise the window settings as you wish. The detectors used in the Multi-Wiper™ are elongated. This additional crystal mass improves the “stopping power” for higher energy isotopes, (such as PET). E-Lead™ eliminates crosstalk between wells when high energy isotopes are counted. By using E-Lead™, counting even PET isotopes is not a problem.



System Diagnostics

The Multi-Wiper™ has the ability to test many of its parameters.

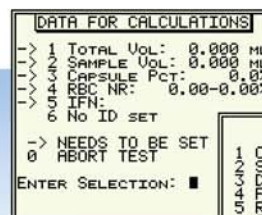
Chi Square and FWHM tests check the system’s detectors and counting circuitry. System RAM test checks the memory.

Auto Calibration performs a detailed re-adjustment of the entire system giving your counter a long maintenance free life.

In-Vitro Tests

The Multi-Wiper™ is programmed to run a variety of common in-vitro tests. From Schillings to GFR, the software does the calculations automatically, so all you need to do is count and report.

Test reports may be customised with the patient’s data, by automatically accessing the patient library.



Patient Library

The Patient Library is designed to store up to 32 patients. Once these patients and their related information have been keyed in, this data works in harmony with the In-Vitro Test section of the software.

Multi-Wiper HE™

Higher Energy Nuclear Medicine Well Counter

The first multi-well counters designed specifically for Nuclear Medicine

- Available with 1, 2 or 3 wells
- E-Lead™ eliminates well-to-well crosstalk
- Automatic DPM calculation with AutoSpect™ (No sources needed)
- Very compact

Isotope Library

While the standard multi-well can count isotopes up to 1Mev, there is a substantial efficiency loss at the high end. Departments routinely counting higher energy isotopes may wish for the greater stopping power and heavier shielding of the Multi-Wiper™ HE. Larger crystals improve high energy efficiency and make counting up to 2Mev practical.



Specification

Detectors	Well-type 50mm x 50mm NaI(tl) crystals coupled to a high gain PMT.
Analyser	4096 channels MCA, 0Kev – 2Mev range, automatic dead time correction.
Well Liner	Removable plastic well liners prevents detector contamination.
Display	LED Backlight 11.25cm LCD.
Shielding	32mm virgin lead shielding with E-lead to eliminate crosstalk with high energy isotopes.
Software	Designed specifically for the Nuclear Medicine laboratory: Schilling, Plasma Volume, Red Cell Mass, GFR, CPM Counter, Comprehensive Wipe Testing.
Dimensions	1-3 well: 46cm x 27cm x 34cm. (30-34kg).
Power	110/120 50/60hz or 220/240 50/60hz.

Single Detector Wipe Test / Well Counter

4096 channel analyser for easy isotope identification

- Wipe test results in DPM
- Pass/Fail based on user-programmable trigger levels
- Heavy shielding for low-background readings
- Exceeds NRC and state regulations for unrestricted areas
- Automatic calibration with Cs137 or Co57
- AutoSpect™ automatic efficiency calculation for any isotope
- FWHM and Chi Square analysis
- Accurately identify wipe test contaminants with 12-bit precision
- Automatic energy compensation
- Advanced engineering for years of trouble-free operation
- Very economical



Specification

Detectors	Well-type NaI(Tl) crystals coupled to a high gain PMT.
Analyser	4096 channels MCA, 0-1Mev range, automatic dead time correction.
Well Liner	Removable plastic well liner prevents detector contamination.
Display	LED backlit 11.25cm LCD.
Shielding	20mm virgin lead shielding.
Software	Designed specifically for the Nuclear Medicine laboratory: Schilling, Plasma Volume, Red Cell Mass, GFR, CPM Counter, Comprehensive Wipe Testing.
Dimensions	Base unit - 27cm W x 22cm D x 12cm H. Detector tower - 15cm D x 25cm. (14.5kg).
Power	10/120 50/60hz or 220/240 50/60hz.

A Higher Degree of Performance

The only well counter specially designed for Nuclear Pharmacies and Cyclotrons

- Choose results in CPM, DPM, nCi, μ Ci, mCi, Bq, KBq or MBq
- Reverse decay a test run of samples automatically
- Q.C. hot samples -300,000+ CPS with excellent linearity
- Sample volume correction
- Extremely flexible sample count times
- Decay calculator; decay a sample to the past or future
- Powerful, yet simple to use

```
EDIT TEST
1 NAME TEST 1
2 ISOTOPE FULL
3 COUNT TIME(MIN): 1.00
  ITERATIONS: NONE
4 PRINT RESULTS N
5 SUBTRACT BACKGROUND Y
6 REVERSE DECAY CORR. N
7 SAMPLE VOLUME NONE
SELECT FUNCTION: █
```

The Test Library

The Test Library can store 16 custom tests. Do you have high background in your facility? 19mm lead shielding and channel by channel background subtraction virtually eliminates error.



```
VOLUME CORRECTION
ISOTOPE Tc99M
1 VOLUME DATA POINTS(UL)
  100,200,300,400,
  500
2 TUBE TYPE
3 CREATE CORR. VALUES
4 DISPLAY CORR. VALUES
5 DISPLAY CORR. CURVE
SELECT FUNCTION:
```

Reverse Decay Correction

Another important feature of the Wiper™ nPhD is you can count multiple samples in a batch without fear of error associated with fast decay isotopes. Each sample is automatically decay corrected to the time of the first sample.

Volume Correction

Sample volume count errors are a thing of the past. With Wiper™ nPhD you can configure a test to use a volume correction curve that will correct the efficiency at different volumes.

Put away your calculator and charts, the work is done automatically.

Specification

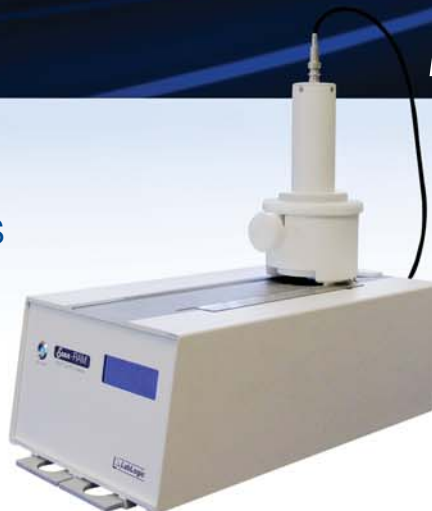
- | | |
|------------|---|
| Detector | Well-type NaI(Tl) crystal coupled to a high gain PMT. |
| Analyser | 4096 channels MCA, 0 - 1Mev range, automatic dead time correction. Count rates over 18M CPM. |
| Well Liner | Removable plastic well liner prevents detector contamination. |
| Display | LED backlit 11.25cm LCD. |
| Shielding | 20mm virgin lead shielding. Automatic Background Subtraction. |
| Software | Designed specifically for the Nuclear Medicine laboratory: Schilling, Plasma Volume, Red Cell Mass, GFR, CPM Counter, Comprehensive Wipe Testing. |
| Dimensions | Base unit - 27cm W x 22cm D x 12cm H. Detector tower - 15cm D x 25cm. (14.5kg). |
| Power | 100-240VAC 50-60hz. |

Other LabLogic related products



Flow-RAM™

Flow-RAM is the new and compact radio HPLC detector for PET and SPECT applications.



Scan-RAM™

This innovative PET and SPECT radio TLC scanner also offers many of the features afforded by the Flow-RAM.

Posi-RAM™ model 4

Posi-RAM is a PET Metabolite radio HPLC detector that uses two BGO crystals that work in coincidence resulting in excellent signal to noise ratio.



Laura™ Radiochromatography Data System

Instrument control, digital data collection, analysis and reporting.

All achieved using the industry standard radiochromatography data system Laura.

Laura has been the recognised industry standard software for radiochromatography for the best part of 20 years. The latest evolution of Laura features control of many of the world's leading HPLC and radio detector systems to provide a single point of control for the entire radiochromatography analysis.

Laura also features;

Half-life correction.

Seamless interface with PETra™.

Scaleable solution from stand-alone to enterprise level.

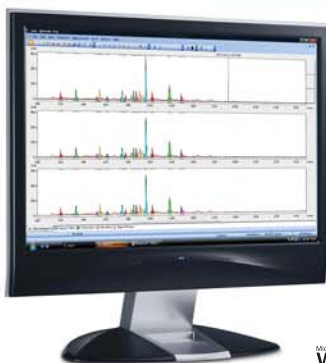
GLP and 21 CFR part 11 compliance options.

Document management system.

Automatic peak finder.

Unique summary table function for data comparison.

Powerful reporting and analysis tools.



Compatible with:



Nuclear Medicine & PET Gamma Counters

Other LabLogic products & services...



Service & Support

Users of our instrumentation can benefit from our comprehensive, fully inclusive instrument service and support.

We provide complete service and support for all of our customers to give reassurance that if things go wrong, help is only an e-mail or phone call away.

Service.
Support.
Reassurance.



Validation Services

We believe that nobody knows and understands our systems and the needs of the nuclear medicine laboratory better than we do, which is why we have put together our Validation Service to enable you to implement and get maximum value from your investment as quickly as possible.

We work as a partner with your System Manager and users to provide a tailored Validation Plan suited to your needs. Our Validation Specialists incorporate years of experience in GLP system validation, detailed knowledge of our systems, together with other industry standard systems to help you meet your Company's requirements.

Industry Specialists.

For other instruments in our range please visit our website: www.lablogic.com



Certificate No:1535



Certificate No:1535



INVESTOR IN PEOPLE



Europe

LabLogic Systems Limited,
Paradigm House, 3 Melbourne Avenue,
Broomhill, Sheffield, England,
S10 2QJ, U.K.

E-mail: solutions@lablogic.com

Tel: +44 (0) 114 266 7267

Fax: +44 (0) 114 266 3944

USA & Canada

LabLogic Systems, Inc.
East Pointe Park,
1040 East Brandon Blvd.
Brandon, FL 33511-5509

E-mail: sales@lablogic.com

Tel: +1-813-626-6848

Tel: +1-800-875-INUS (4687)

Fax: 813-620-3708

www.lablogic.com