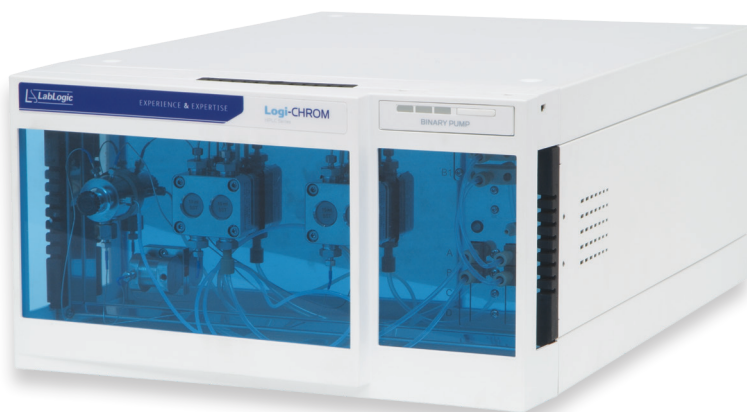


Logi-CHROM

Binary Pump



Logic-CHROM Binary Pump

Pump Head	10 ml / min., with spring-loaded check valves
Pulsation Compensation	Active pressure and pulsation compensation
Pump Head Materials	Stainless steel
Maximum Pressure	70 Mpa (700 bar, 10150 psi) up to 5 ml/min., 40 MPa (400 bar, 5800 psi)
Solvent Selection Valve	2 x 2 channels (dependent on model)
Flow Rate Range	0.001 - 10 ml/min. (0.02 - 10 ml/min. recommended)
Flow Rate Increment	0.001 ml/min.
Flow Rate Accuracy	± 1%, measured at 5 - 80% of flow range range using ethanol
Flow Rate Precision	< 0.1% RSD based on retention time at constant room temperature
Pulsation	< 2 % amplitude (typically < 1.3 %) or < 0.3 MPa (3 bar), whatever is greater, at 1 mL/min ethanol, at all pressures > 1 MPa (10 bar, 147 psi).

Gradient System

Gradient Formation	High pressure binary mixing
Gradient Range	0 - 100%, (5 - 95% recommended)
HPG: Minimum Increment	0.1%
HPG: Gradient Accuracy	± 0.3 % at 1 ml/min, 150 bar (ethanol/caffeine tracer) ± 1 % (5 - 95 %, measured at 0.1 – 10 ml/min, water/caffeine tracer)
HPG: Gradient Precision	< 0.1 % RSD at 1 ml/min, 0.3% RSD overall, based on retention time at constant room temperature
Mixing Volume	100 µl (optional 50 or 200 µl available)
Delay Volume	160 µl (depending on mixer)
Piston Seal Washing	Standard

Specification Sheet

Gradient System

System Protection	Soft start, Pmin and Pmax are programmable
Wetted Materials	Stainless steel, graphite fibre reinforced PTFE, FKM, PEEK, sapphire, zirconium oxide (ZrO2)

Degasser

Degasser Channels	2 channels, Teflon® AF (dependent on model)
Degasser Maximum Flow Rate	10 ml/min
Degassing Method	Gas permeation through Teflon® AF amorphous fluoropolymer membrane
Degassing Efficiency	< 0.5 ppm dissolved O2 at 1 ml/min
Degassing Chamber Volume	480 µl volume per channel
Solvent Applicability	Universal, with the exception of hydrochloric acid and halogenated hydrocarbons - in particular hexafluoroisopropanol (HFIP)
Wetted Materials	PEEK, Tefzel®, Teflon® AF
Vacuum Chamber	Polypropylene and stainless steel
Vacuum Pump	Low hysteresis behaviour

Ambient

Ambient Conditions	Temperature range: 10-40°C; 50-104°F humidity: below 90 % humidity (non-condensing)
Leak Sensor	Yes
Power Supply	Voltage range: 100 - 240 V, 50 - 60 Hz

Communication

Interfaces	LAN, Pin header connectors (Analog IN, Start IN, Error IN)
Control	Laura Software
Analog Inputs	Flow Rate: 0 - 10 V via pin head connectors
Analog Outputs	8 event outputs (TTL, OC, Relays) and 24 V

Europe & Worldwide

LabLogic Systems Limited

Paradigm House, 3 Melbourne Avenue
Broomhill, Sheffield, S10 2QJ, UK

E-mail: solutions@lablogic.com

Tel: +44 (0)114 266 7267

Fax: +44 (0)114 266 3944

www.lablogic.com



Certificate No: 1535
ISO 9001



USA & Canada

LabLogic Systems, Inc.

1911 N US HWY 301, Suite 140
Tampa, FL 33619, USA

E-mail: solutions@lablogic.com

Tel: +1-813-626-6848

Fax: +1-813-620-3708

www.lablogic.com



Certificate No: 10926
ISO 9001



EXPERIENCE & EXPERTISE