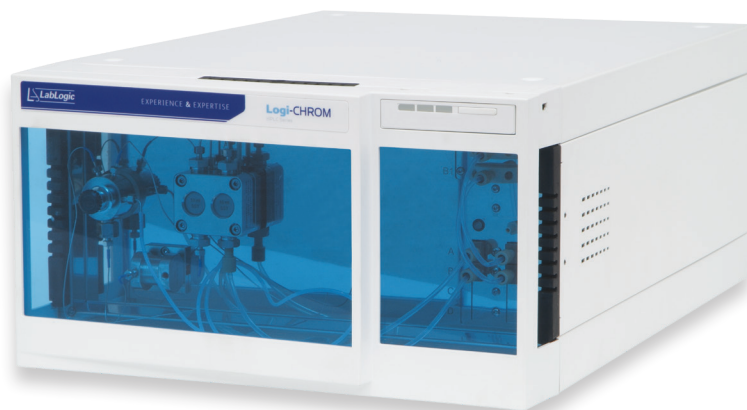


Logi-CHROM

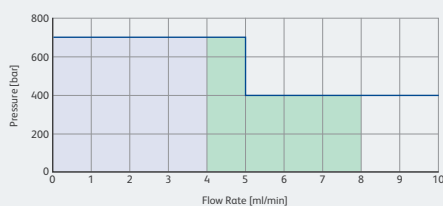
Quaternary (LPG) Pump – Non Metal



Logic-CHROM Quaternary (LPG) Pump

Maximum Flow Rate	10 ml / min.
Flow Rate Range	0.001 - 10 ml / min.
Flow Rate Increment	0.001 ml / min.
Maximum Delivery Pressure (psi)	10150
Maximum Delivery Pressure (bar)	700
Maximum Delivery Pressure (MPa)	70

Pressure Range



Pump Head Materials	Ceramic
Gradient	Low pressure gradient (quaternary)
Leak Management	Yes
Wetted Materials	GFP (graphite fibre reinforced PTFE), sapphire, ruby, aluminium oxide (Al ₂ O ₃)
Best Working Conditions	0.1 - 8.0 ml / min.
Continuous Working Conditions	0.1 – 4.0 ml / min
Flow Rate Accuracy	< 1 %
Flow Rate Accuracy Conditions	Measured at 5-80 % of flow range, using ethanol
Flow Rate Precision	0.1 % RSD
Flow Rate Precision Conditions	Based on the retention time at constant room temperature
Gradient Range	0 - 100%

Specification Sheet

Logic-CHROM Quaternary (LPG) Pump

Gradient Range (Recommended)	1 - 99%
Gradient Accuracy	± 0.3 % at 1 ml / min, 150 bar ethanol / caffeine tracer) ± 2 % (1 - 99 %, measured at 5 - 50 % of the flow range, water / caffeine tracer)
Gradient Precision	< 0.1 % RSD at 1 ml / min, 0. % RSD overall, based on retention time at constant room temperature
Gradient Minimum Increment	0.1 %
Mixing Volume	100 µl
Delay Volume	160 µl
Degasser	Yes
Pulsation	< 2 % Amplitude (typically: < 1.3 %) or < 3 bar (0.3 MPa), whatever is greater, at 1 ml/min ethanol, at all pressures > 10 bar (1 MPa, 147 psi)
Pulsation Compensation	Active pressure and pulsation compensation
Active Piston Seal Wash	Yes
Piston Seal Washing	Yes
System Protection	Soft start, Pmin und Pmax are programmable
Pump Head Inlet (Standard)	UNF 1/4-28 Thread
Pump Head Outlet (Standard)	UNF 10-32 Thread

Communication

Interfaces	LAN, Pin header connectors (Analog IN, Start In, Error IN)
Control	Laura Software
Analog Inputs	Flow rate, 0 - 10 V via pin header connectors
Analog Outputs	8 event outputs (TTL, OC, Relays) and 24 V

General

Power Supply	100 - 240 V; 50 - 60 Hz; Maximum power consumption 100 Watt
Dimensions	361 mm x 208.2 mm x 523 mm (W x H x D)
Leak Sensor	Yes
Ambient Conditions	4-40 °C (39.2-104 °F) Air humidity below 90%, non-condensing

Europe & Worldwide

LabLogic Systems Limited

Paradigm House, 3 Melbourne Avenue
Broomhill, Sheffield, S10 2QJ, UK

E-mail: solutions@lablogic.com

Tel: +44 (0)114 266 7267

Fax: +44 (0)114 266 3944

www.lablogic.com



Certificate No: 1535
ISO 9001



INVESTORS
IN PEOPLE | Silver
Until 2022

USA & Canada

LabLogic Systems, Inc.

1911 N US HWY 301, Suite 140
Tampa, FL 33619, USA

E-mail: solutions@lablogic.com

Tel: +1-813-626-6848

Fax: +1-813-620-3708

www.lablogic.com



Certificate No: 10926
ISO 9001



EXPERIENCE & EXPERTISE