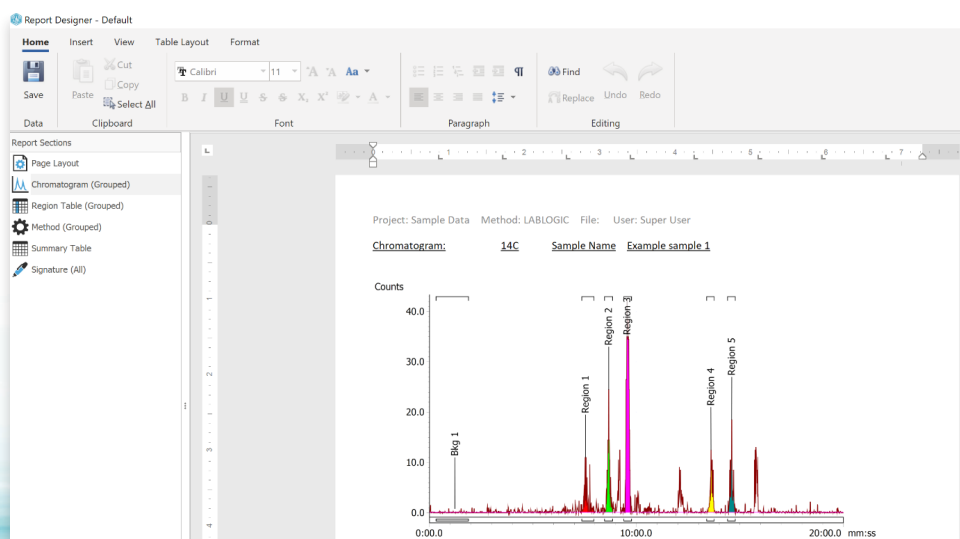




# Laura<sup>TM</sup>

Radiochromatography Data  
Collection and Analysis Software



**New Batch**

Data Collection

Project: Sample Data Method: Tester\_2 Gradient: Tester

Name: Range: 1 to 1

Options

Pre Run Time: 0s Run Time: 30m Post Run Time: 0s

Print Report: Disabled

Bkg Subtract:  Spectrum Analysis

Calibration

Create: None  Use: None

Include New QCs  Filter Calibrated by Method

No	Sample Name	Sample Type	Vial No	Injection Volume (µL)	Comment
1			1	0.00	

Print Batch Details

OK Cancel

## Laura version 6.1.1.20 with new Report Designer is now released.

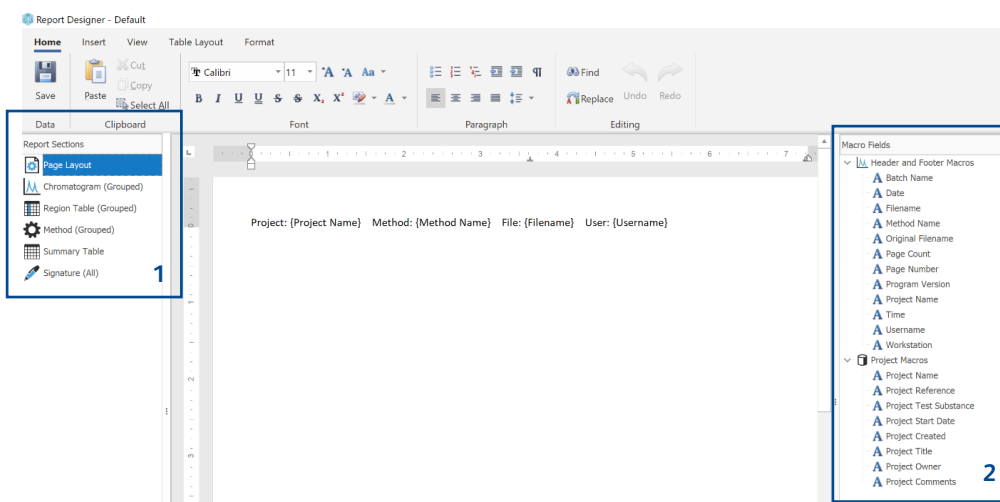
The latest version of the industry standard radiochromatography software Laura has now been released. As always the full set of release notes for this new version are available on the LabLogic web site so you are encouraged to look through these in their entirety, however, here are some of the most significant enhancements in this new version.

### All new Report Designer

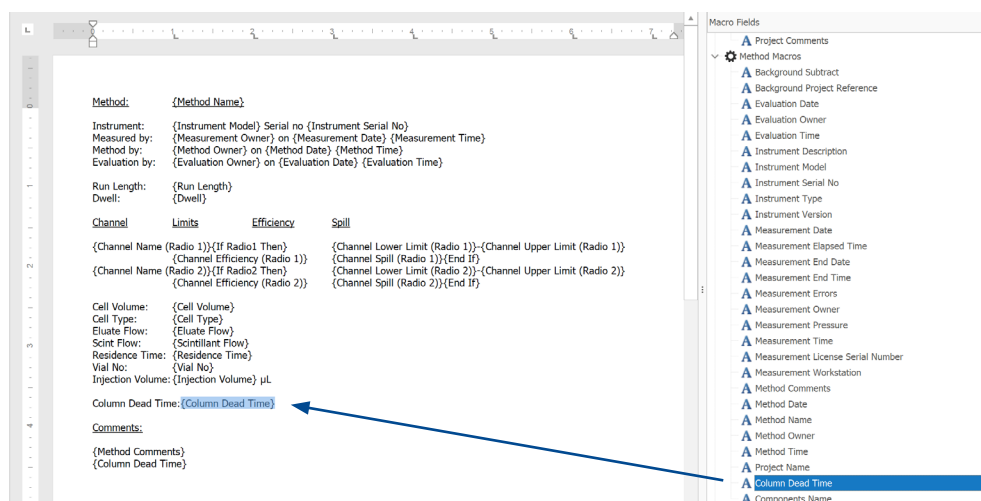
The Laura report designer has been completely updated to make designing report templates much simpler and effective for the user.


The report sections tool **1** on the left allows the user to progress through the report layout.

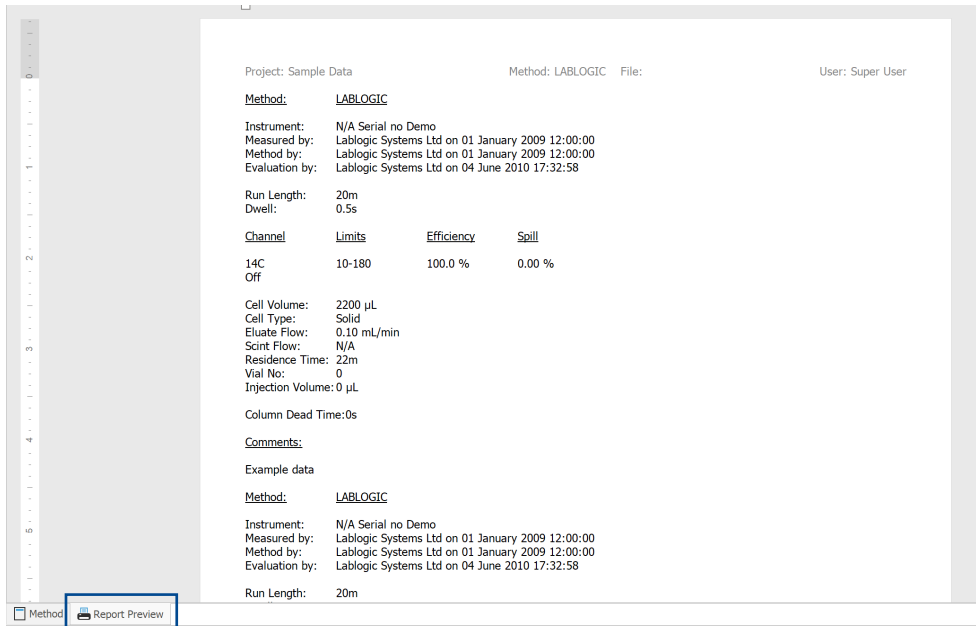
Macro fields **2** then become available relevant to the section view on the page.



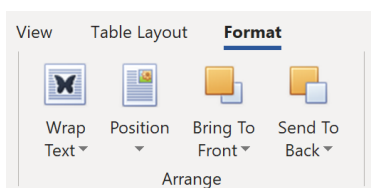
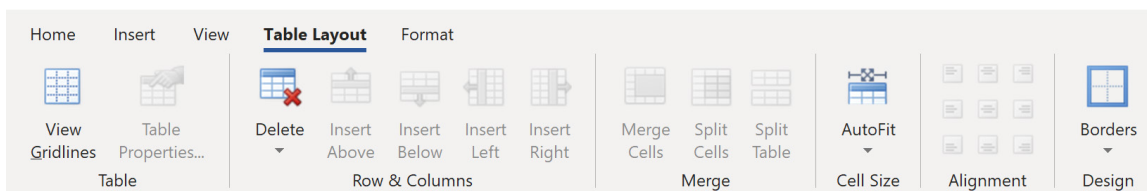
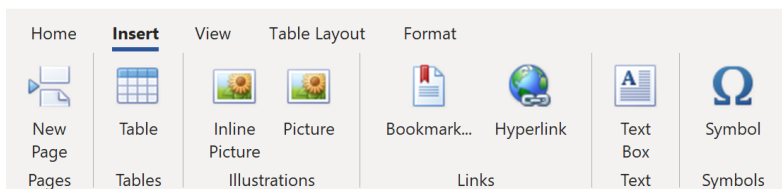
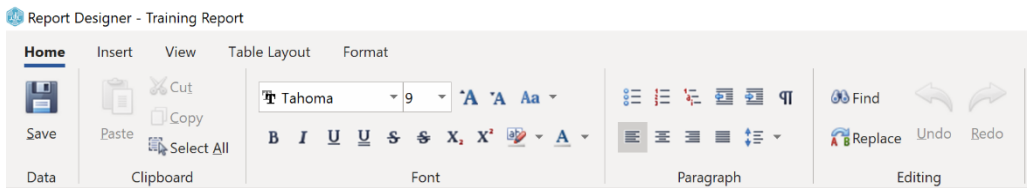
When in the relevant section macro's can be dragged from the Macro Fields section and placed in the relevant area on the report designer page.



With a result file open by selecting Report Preview  a view of the report format for the section is available to aid design of the report.

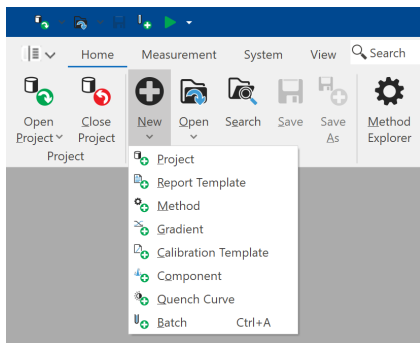
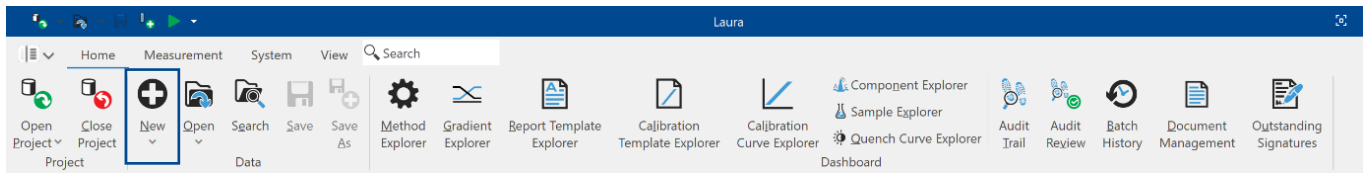


There are also many more tools available for styling and designing how the report appears.

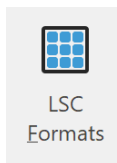


## Other new functionality

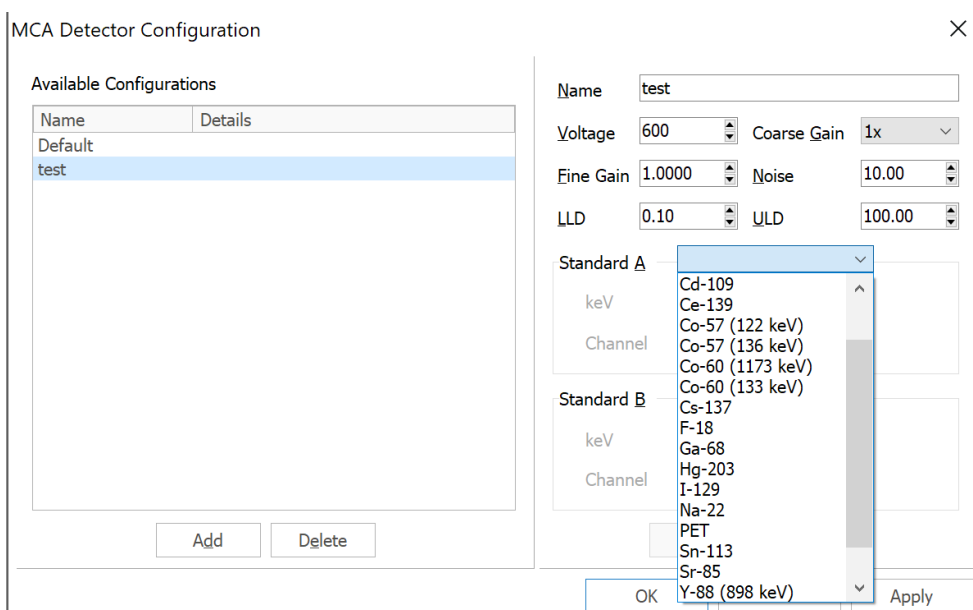
A new function has been added to the Home ribbon to allow easy access when creating new methods, gradients, report templates, etc.



The LSC import function has been enhanced so users can now import files without alpha-numeric well plate details.



The functionality for calibrating and MCA has been enhanced with the addition of Ce-139, Cd-109, Hg-203, I-129, Sn-113, Sr-85 and Y-88 to the nuclide list for calibration.



A Background Area function has been added and can be selected as a column in the region table. This value shows the area of background that has been identified under that region of interest.

Properties - 14C

- Annotations
- Calculations
- Channel Names
- Colours
- 0.0 Decimal Places
- Display
- Gradients
- Regions Appearance
- Regions Table
- X-Axis
- Y-Axis

Available Columns

- %Energy Resolution
- %TAR
- Resolution
- Relative Retention #1
- %Relative Area #1
- %Relative Height #1
- Relative Retention #2
- %Relative Area #2
- %Relative Height #2
- Relative Retention #3
- %Relative Area #3
- %Relative Height #3
- Relative Retention #4
- %Relative Area #4
- %Relative Height #4
- Relative Retention #5
- %Relative Area #5
- %Relative Height #5
- Range
- Range (Vial No)
- Capacity Factor
- Range (min)
- Noise
- Noise SD

Show Columns

- Name
- Colour
- Start
- End
- Retention
- Height
- Area
- Average
- %Total
- %ROI
- Peak Type
- Flag
- Background Area

Background Area (Counts)

	4.9
	4.8
	6.1
	4.2
	7.4
	2.7
	1.8
	3.7
	5.9
	6.4
	2.5

The content of the signatures report in the audit trail has been increased to make it clearer what is Not Signed Off, Locked and Unlocked.

Audit Type: Evaluation Signatures | Project: Sample Data

Meaning: All

Range: From 26/05/2020 To 26/05/2020 23:59:59

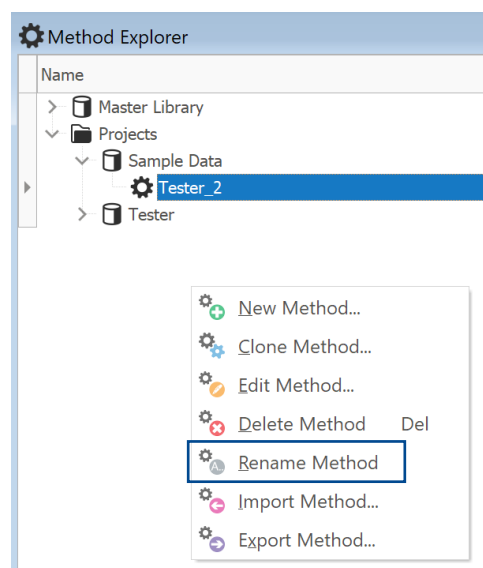
Workstation: All Workstations | Operator: All

Order By: Audit ID

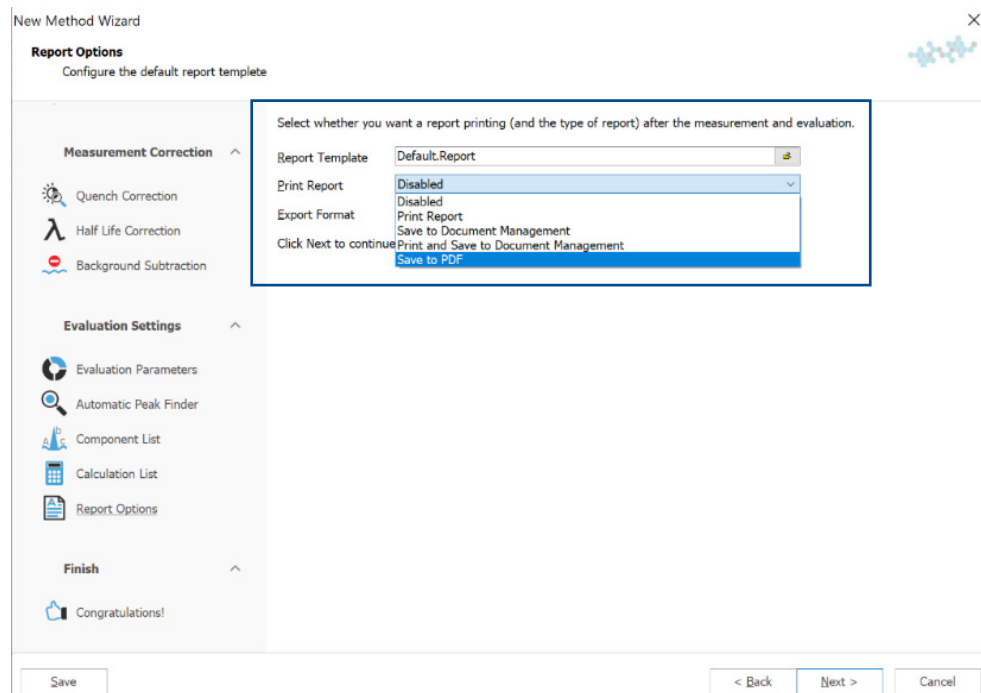
<b>Signature ID:</b>	A57CCEEDA91F4EC4A4B0FD6012CF01BA-1021
<b>Description:</b>	Test #2303 unsigned.Evaluation
<b>Name:</b>	N/A
<b>Date/Time:</b>	N/A
<b>Workstation:</b>	Keith-sales
<b>Meaning:</b>	N/A
<b>Reason:</b>	N/A
<b>Status:</b>	Not Signed Off
<b>Signature ID:</b>	A57CCEEDA91F4EC4A4B0FD6012CF01BA-1022
<b>Description:</b>	Test #2303 unlocked.Evaluation
<b>Name:</b>	Super User (A.USER)
<b>Date/Time:</b>	26/05/2020 13:07:30 GMT Summer Time
<b>Workstation:</b>	Keith-sales
<b>Meaning:</b>	Authorship
<b>Reason:</b>	N/A
<b>Status:</b>	Unlocked
<b>Signature ID:</b>	A57CCEEDA91F4EC4A4B0FD6012CF01BA-1023
<b>Description:</b>	Test #2303 locked.Evaluation
<b>Name:</b>	Super User (A.USER)
<b>Date/Time:</b>	26/05/2020 13:08:07 GMT Summer Time
<b>Workstation:</b>	Keith-sales
<b>Meaning:</b>	Authorship
<b>Reason:</b>	N/A
<b>Status:</b>	Locked

# Software Release

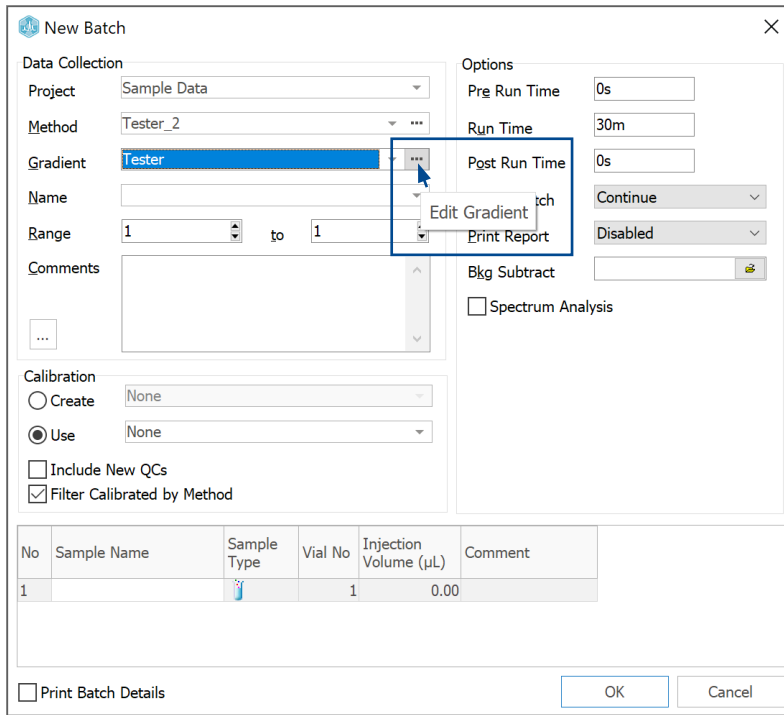
Functionality has been added so that methods and gradients can be renamed, obviously tracked by the audit trail. This function is available in the method and gradient explorers under a right mouse click.



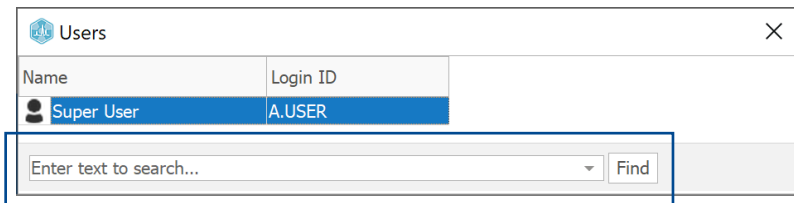
Save to PDF has been added to the options for generating an automatic printing of the report as part of the method parameters.



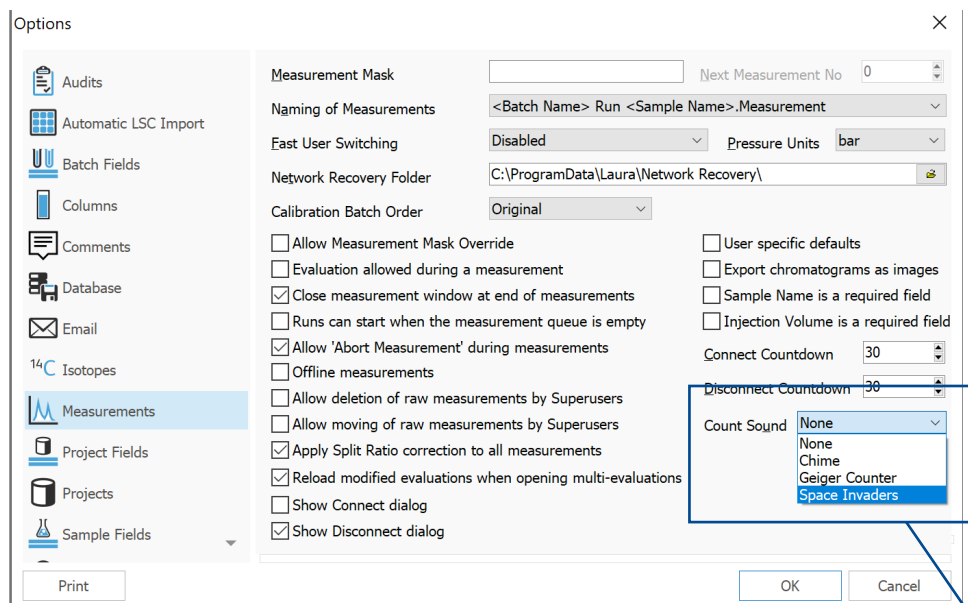
The ability to edit the gradient as well as the method at the point of adding a batch for data collection. Any changes would of course require either a name change or audit response if appropriate.



A new search function has to the Users tool to allow easy searching for users when the user site has a large number of Laura users registered.

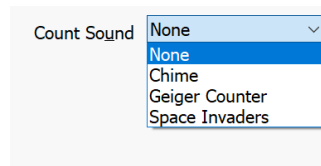


A countdown time can be configured to inform the user on either connection or disconnection of Laura from the instruments under its control.



The Count Sound option can be used to enable a sound effect to reflect the current activity level – e.g. simulate a Geiger counter.

Detail has been added to the information screen to advise on the power saving functions configured on the workstation. There will also be a message at startup to advise the user.



More Info

Name	IP Address	Subnet Mask	Comments
Ethernet	169.254.165.103	240.0.0.0	Computer can turn off this device to save power
Bluetooth Network Connection	169.254.225.11	240.0.0.0	Computer can turn off this device to save power

**Further additional functionality added to this release including:**

- Support for using the full loop injection mode with the Logi-CHROM autosampler.
- The ability to import TLC data from the AIDA system has been added.
- mmol/mL has been added to the available concentration units for regression analysis.

**Additional instrument support has been added to this version:**

- Support has been added for the Logi-CHROM Isocratic pump module.
- Support has been added for using Sykam CD alongside the Logi-CHROM autosampler.

**Europe & Worldwide**

**LabLogic Systems Limited**

Paradigm House, 3 Melbourne Avenue  
Broomhill, Sheffield, S10 2QJ, UK

E-mail: solutions@lablogic.com  
Tel: +44 (0)114 266 7267  
Fax: +44 (0)114 266 3944



**USA & Canada**

**LabLogic Systems, Inc.**

1911 N US HWY 301, Suite 140  
Tampa, FL 33619, USA

E-mail: solutions@lablogic.com  
Tel: +1-813-626-6848  
Fax: +1-813-620-3708



EXPERIENCE & EXPERTISE