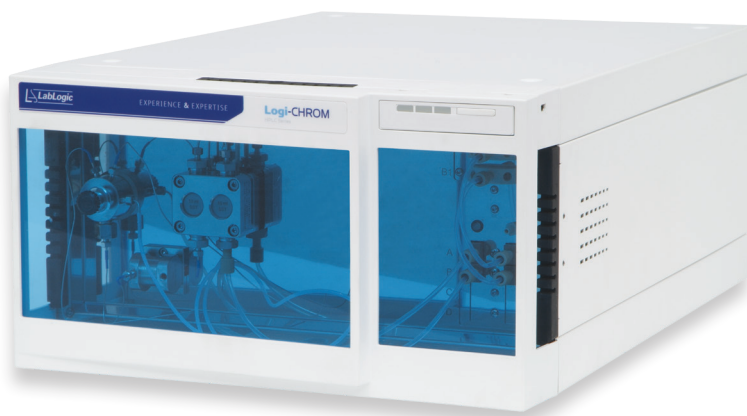


Logi-CHROM

Isocratic Pump



Logi-CHROM Isocratic Pump, stainless steel

Pump Head	10 ml
Flow Rate Range	0.001 - 10 ml / min.
Maximum Delivery Pressure	10150 psi / 700 bar / 70 MPa up to 5 ml / min.; 5800 psi / 400 bar / 40 MPa up to 10 ml/min.
Wetted Materials	GFP, Stainless Steel, FKM, PEEK, Sapphire, Aluminium Oxide, Ruby, Zirconium Oxide
Piston Seal Washing	Active wash
Pulsation Compensation	Active pulsation compensation
Mixing Volume	100 µl
Flow Rate Increment	ml / min.
Flow Rate Accuracy	± 1%, measured at 5 - 80% of flow range using ethanol
Flow Rate Precision	< 0.1% RSD based on retention time at constant room temperature
Liquid Temperature Range	4 - 60°C (39.2 - 140°F)
Best Working Conditions	0.1 - 8.0 ml / min.
Continuous Working Conditions	0.1 - 4.0 ml / min.
Flow Rate Accuracy	< 1%
Flow Rate Accuracy Conditions	Measured at 5 - 80% of flow range, using ethanol
Flow Rate Precision	0.1% RSD
Flow Rate Precision Conditions	Based on the retention time at constant room temperature
Gradient Range	0 - 100%

Specification Sheet

Communication

Interfaces	LAN, Pin header connectors (Analog IN, Start IN, Error IN)
Control	Laura Software
Analog Inputs	Flow Rate: 0 - 10 V via pin head connectors
Analog Outputs	8 event outputs (TTL, OC, Relays) and 24 V

General

Power Supply	100 - 240 V; 50 - 60 Hz; Maximum power consumption 100 Watt
Dimensions	361 x 208.2 x 523 mm (W x H x D)
Leak Sensor	Yes
Ambient Conditions	4 - 40°C (39.2 - 104°F) air humidity below 90%, non-condensing

Degasser (Optional)

Degasser Channels	2 channels, Teflon® AF (dependent on model)
Degasser Maximum Flow Rate	10 ml/min
Degassing Method	Gas permeation through Teflon® AF amorphous fluoropolymer membrane
Degassing Efficiency	< 0.5 ppm dissolved O2 at 1 ml/min
Degassing Chamber Volume	480 µl volume per channel
Solvent Applicability	Universal, with the exception of hydrochloric acid and halogenated hydrocarbons - in particular hexafluoroisopropanol (HFIP)
Wetted Materials	PEEK, Tefzel®, Teflon® AF
Vacuum Chamber	Polypropylene and stainless steel
Vacuum Pump	Low hysteresis behaviour

Europe & Worldwide

LabLogic Systems Limited

Paradigm House, 3 Melbourne Avenue
Broomhill, Sheffield, S10 2QJ, UK

E-mail: solutions@lablogic.com

Tel: +44 (0)114 266 7267

Fax: +44 (0)114 266 3944

www.lablogic.com



USA & Canada

LabLogic Systems, Inc.

1911 N US HWY 301, Suite 140
Tampa, FL 33619, USA

E-mail: solutions@lablogic.com

Tel: +1-813-626-6848

Fax: +1-813-620-3708

www.lablogic.com



Certificate No: 10926
ISO 9001



EXPERIENCE & EXPERTISE