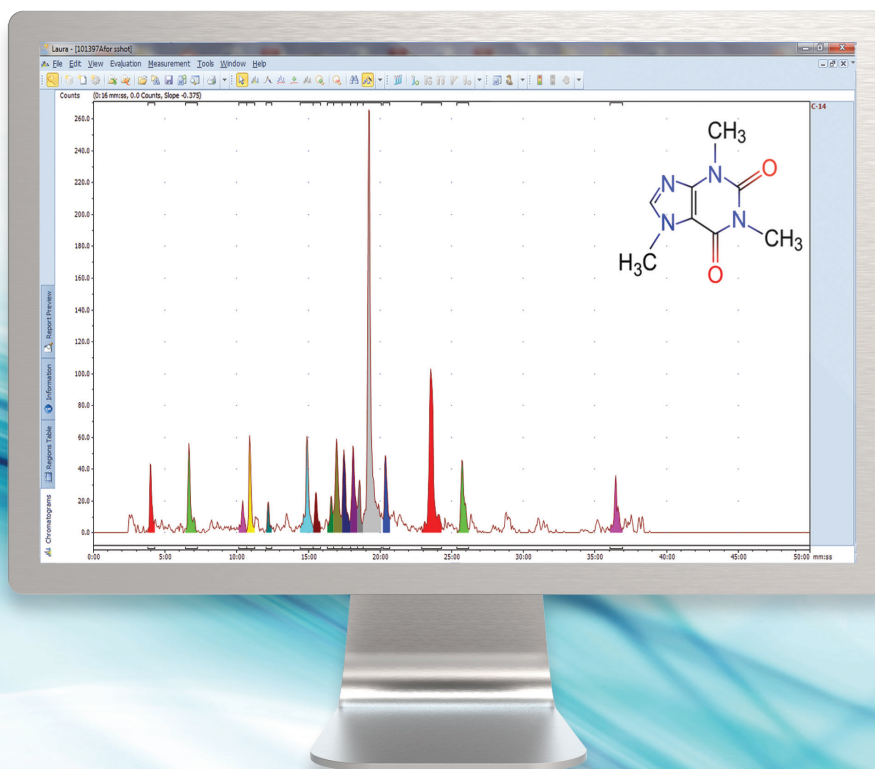




Laura™

Radiochromatography Data
Collection and Analysis Software



v4.2.11.129

 **LabLogic**

EXPERIENCE & EXPERTISE

A new release of Laura v4.2.11.129 is now available

In this release functionality has been added for evaluation and data analysis. Additional instruments and instrument modules are now supported and functionality added to the add batch, instrument status and auto sampler control utilities.

As always the full list of changes is available via the software release notes, however a few of the more interesting additions and changes are highlighted in this document.

Added Instrument Support

Waters ACQUITY Arc system now supported

In this new release support has been added for the Waters ACQUITY Arc system.

The FTN-R (Sample Manager Flow Through Needle-R) and QSM-R (Quaternary Solvent Manager) modules are also supported in this release.

This further enhances the support of Waters systems in Laura and should help us support users as they move forward in the new UPLC techniques.



Additional Agilent systems now supported

As part of the ongoing commitment to Agilent support in Laura the Agilent LC 1220 (G 4294B) with G4285B Diode Array Detector is now supported.

As with the Waters systems this now gives Laura users even more flexibility when choosing their HPLC system.



For users with the Agilent Fluorescence detectors additional functionality is available to control the lamp mode.

Select the configuration options for the fluorescence detector.

Signals	Store	Excitation Wavelength	Emission Wavelength
A	<input checked="" type="checkbox"/>	230 nm	460 nm
B	<input type="checkbox"/>	230 nm	460 nm
C	<input type="checkbox"/>	230 nm	460 nm
D	<input type="checkbox"/>	230 nm	460 nm

Lamp Mode: Deuterium

Dwell: 1s

Click Next to continue.

Functionality has also been added to support the Agilent fraction collectors so that peak detection can be used to trigger the fraction collector. This function can now be used on either the radio or UV channel.

Select the configuration options for the automatic fraction collector.

Trigger Mode: Peak based

Detector: UV Detector

Working Mode: Threshold

Up Slope: Off

Down Slope: Slope and Threshold

Threshold: 5 mAU

Upper Threshold: 3000 mAU

Fraction Time: 30s

Number of Fractions: 96

Fraction Volume: 1000 µL

Max Fill Volume: default µL

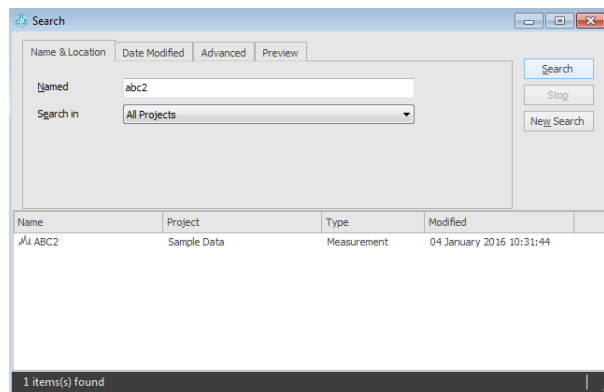
Rinse at the start of fraction collection

Rinse between each fraction

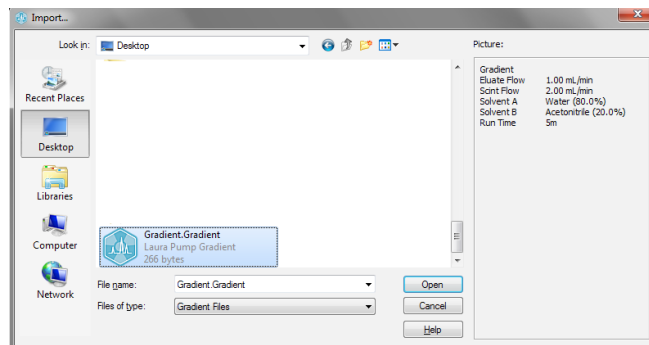
Click Next to continue.

Other Added Features and Enhancements

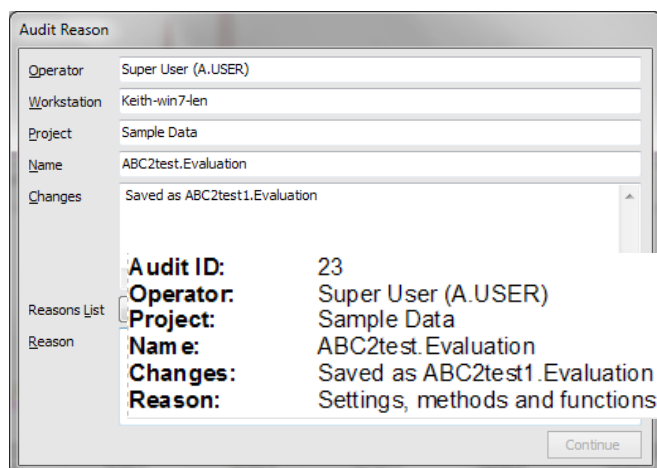
Functionality has been added to the Find | Search tool to make it easier for users to locate data.



A preview of the gradient is now available in the File | Import function.



An extra audit function has been added so that "File \ Save as" can be used to keep a track of the history of a measurement or evaluation.



Date/Time:
Workstation:

Europe & Worldwide

LabLogic Systems Limited

Paradigm House, 3 Melbourne Avenue
Broomhill, Sheffield, S10 2QJ, UK

E-mail: solutions@lablogic.com
Tel: +44 (0)114 266 7267
Fax: +44 (0)114 266 3944



USA & Canada

LabLogic Systems, Inc.

East Pointe Park, 1040 East Brandon Blvd.
Brandon, FL 33511-5509, USA

E-mail: solutions@lablogic.com
Tel: +1-813-626-6848
Fax: +1-813-620-3708



EXPERIENCE & EXPERTISE