



# EC-Detector

PET /SPECT EC (Electrochemical) Detector

[www.lablogic.com](http://www.lablogic.com)



**LabLogic**

EXPERIENCE & EXPERTISE

# Meeting the demands of PET QC analysis

LabLogic's Logi-CHROM Electrochemical Detector has been developed to meet the demands of fast analysis, with excellent detection sensitivity, acquisition frequency and an integrated temperature-controlled compartment. This detector is the ideal solution for all HPLC applications that routinely use electrochemical detection.

## Accurate

The EC-Detector maintains the column and flow cell (separation and detection) at a very accurate and stable temperature.

In addition, the EC-Detector has ADF (Advanced Digital Filter) technology and a new generation of electrochemical flow cell for maximised signal-to-noise ratio and improved sensitivity.

### ADF (Advanced Digital Filtering)

A noise elimination algorithm, specifically developed for electrochemical data.

It improves S/N, thus improving the detection limit by up to a factor of 200, depending on conditions.

## Compliant

As with all LabLogic products, the Logi-CHROM EC-Detector has been designed to meet or exceed regulatory requirements.

The absence of buttons on the front panel ensures that method parameters can only be changed by the operator, with the appropriate level of access via Laura for PET software. All and any changes are accompanied by a full audit trail.

## Industry standard software

The EC-Detector is fully controlled by the single point of control, radiochromatography software Laura for PET and can be seamlessly integrated with the world-leading PET LIMS, PETra.



## Integrated

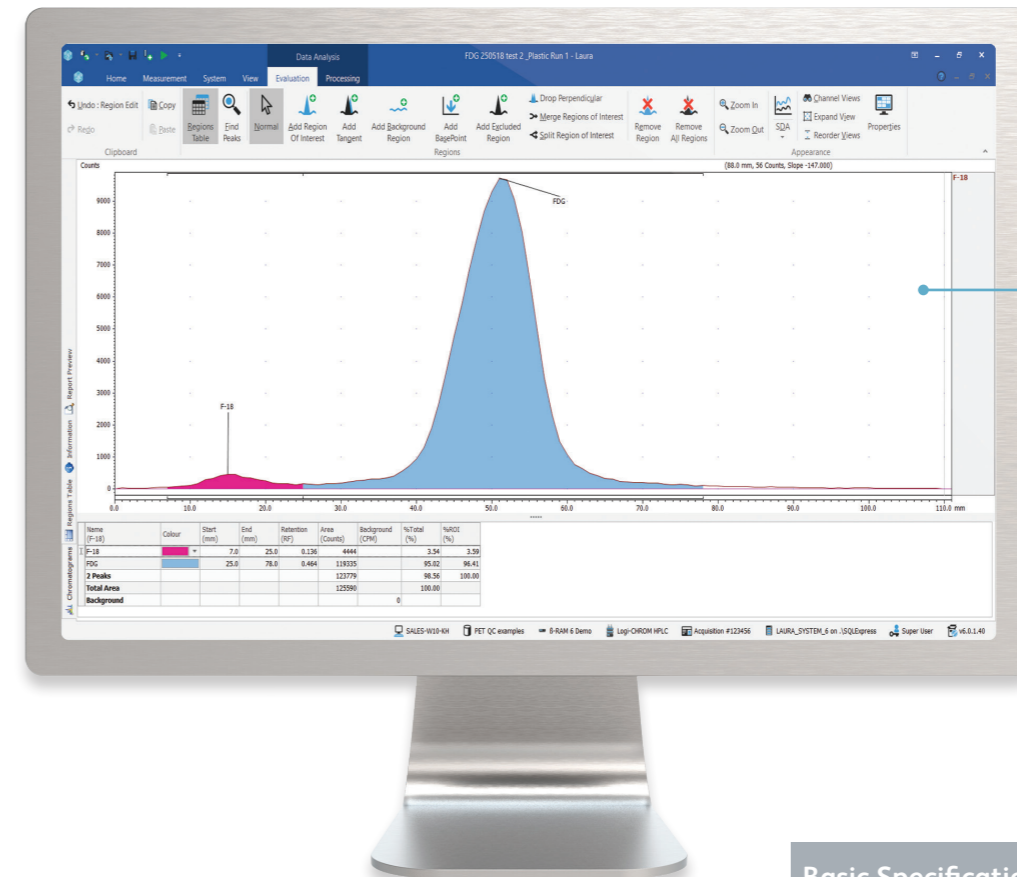
The EC-Detector is part of LabLogic's leading PET solution and can work as a stand-alone instrument or as one module within the Logi-CHROM HPLC Series.



### Integrated temperature control

Highly stable, Faraday-shielded, temperature-controlled compartment accommodating both column and flow cell.

Stable working conditions are a prerequisite for trace analysis – no sensitivity without stability!



### Single point of control

The EC-Detector is fully controlled by Laura for PET.

### EC Flow Cell delivers unsurpassed S/N ratio

The EC Flow Cell is a new-generation detector, specifically designed for highest sensitivity. The tool-free assembly and the continuously adjustable working volume guarantees ease of use and excellent performance.

Basic Specifications	
Power	100 - 240 VAC, 50/60 Hz, 260 VA max., auto-sensing
Dimensions	43 (D) x 22 (W) x 44 (H) cm
Weight	Max 14.4 kg without flow cell and column

Please refer to the Technical Specification Sheet for further information

# Service and Support

Users of our systems can benefit from our comprehensive, fully inclusive service and support.

We can give reassurance that if things go wrong or you need expert advice, help is only an e-mail or phone call away.

# Validation Services

Our Validation Service enables you to implement and get maximum value from your investments as soon as possible.

We work as a partner with your Quality Manager, System Manager and users to provide a tailored Validation Plan, suited to your needs. Our Validation Specialists have years of experience in GLP system validation, detailed knowledge of our systems, together with other industry standard systems to help you meet company and regulatory requirements.

# Training

LabLogic can provide a variety of training courses and workshops to help you get the most out of your instrument and software.

All training is performed by our expert Product and Support Specialists who have many years experience in the development and use of the instruments and software.

Certificates can be provided to complement your internal GLP training records.

## Europe & Worldwide

### LabLogic Systems Limited

Paradigm House, 3 Melbourne Avenue  
Broomhill, Sheffield, S10 2QJ, UK

**E-mail:** [solutions@lablogic.com](mailto:solutions@lablogic.com)

**Tel:** +44 (0)114 266 7267

**Fax:** +44 (0)114 266 3944

[www.lablogic.com](http://www.lablogic.com)

## USA & Canada

### LabLogic Systems, Inc.

1911 N US HWY 301, Suite 140  
Tampa, FL 33619, USA

**E-mail:** [solutions@lablogic.com](mailto:solutions@lablogic.com)

**Tel:** +1-813-626-6848

**Fax:** +1-813-620-3708

[www.lablogic.com](http://www.lablogic.com)



# LabLogic

EXPERIENCE & EXPERTISE



Certificate No: 1535  
ISO 9001



INVESTORS  
IN PEOPLE | Silver  
Until 2022



Certificate No: 10926  
ISO 9001