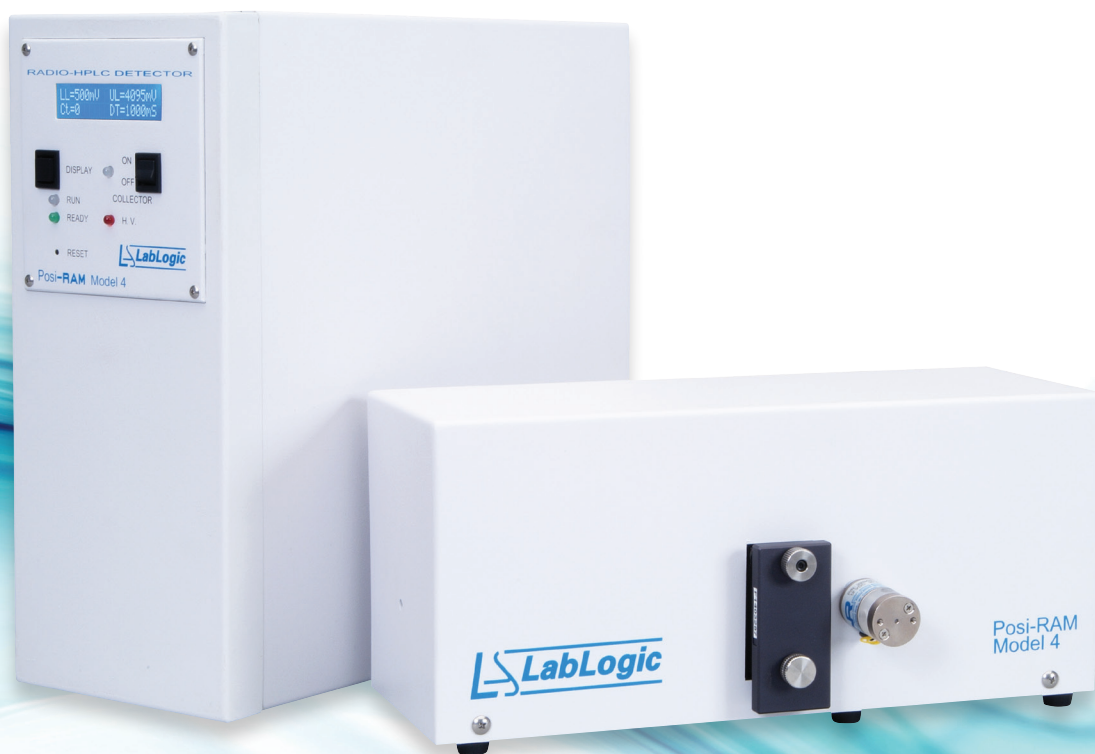


Posi-RAM™

PET Metabolite radio-HPLC Detector



Unsurpassed performance for PET metabolite profiling

Specifically designed for the detection and quantification of low level PET metabolites in the presence of higher levels of a single substance, a therapeutic agent, a test compound, or a substrate.

Posi-RAM utilizes two bismuth germanate (BGO) crystals mounted on matched photomultiplier tubes with a flow cell in between to achieve the highest possible sensitivity. Using fast coincidence electronics, an event is only registered when each of the detector assemblies detects an event within coincidence resolving time of <50 nanoseconds.

The results are low backgrounds and unmatched signal-to-noise ratios, enabling detection and quantification of low-level PET metabolites.

Flexibility

Although, the primary intended use is detection and quantification of low level PET metabolites, Posi-RAM has been designed with flexibility in mind. The coincidence counting circuitry can be switched off to enable gross gamma counting. Under those settings, the Posi-RAM can be used for radiochemical purity checks.

RadWaste diverter valve can be fitted to allow segregation of radioactive and non-radioactive waste in instances where the radionuclides that you work with are long lived, thus allowing the collected waste to stand and decay prior to discarding.

Resolution and sensitivity

To achieve the desired resolution and sensitivity a range of high performance flow cells are available for the Posi-RAM with fixed volumes from 5 µL to 500 µL.

Controlled by Laura for PET

Posi-RAM control, digital data collection, analysis and reporting is provided by Laura for PET, the industry standard radiochromatography data system developed by LabLogic.



External Detector

The detectors are housed separately from the main electronics. This ensures that your electronics are protected in case that there are any leaks.

Collector Valve

The collector valve can be used to direct the sample exiting the Posi-RAM flow cell and into a fraction collector for further analysis.

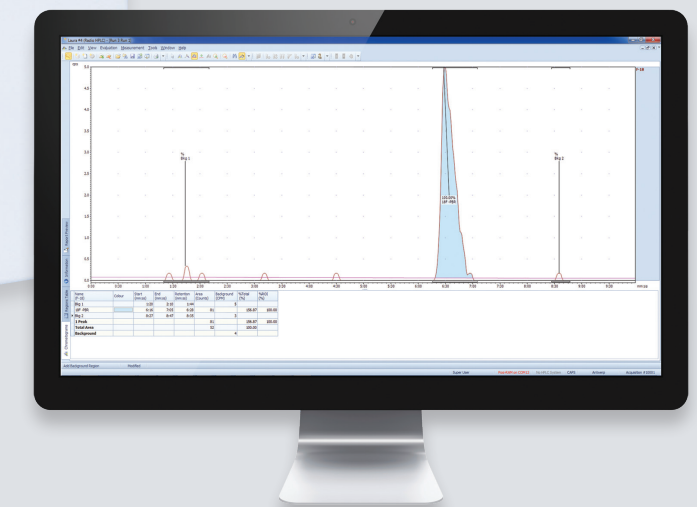


Intelligent Front End Display

At a glance, you can view the instrument's operating parameters and status.

Single Point Control

Laura for PET is the industry standard single point control and data analysis software. It supports over 350 r-HPLC detectors, r-TLC scanners, MCA, GC and HPLC modules from leading manufacturers.



18F PBR 0.1uCi injected onto the column

Basic Specifications

Size	13" (D) x 6" (H) x 13" (W) (33 x 15 x 34 cm)
Detector Size	13" (D) x 6" (H) x 4" (W) (33 x 15 x 11 cm)
Weight	31 lb (14.5 kg)
Detector Weight	14 lb (6.8 kg)

Please refer to the Technical Specification Sheet for further information



Service and Support

Users of our systems can benefit from our comprehensive, fully inclusive service and support.

We provide complete service and support for all of our customers to give reassurance that if things go wrong or you need expert advice, help is only an e-mail or phone call away.



Validation Services

Our Validation Service enables you to implement and get maximum value from your investments as soon as possible.

We work as a partner with your Quality Manager, System Manager and users to provide a tailored Validation Plan suited to your needs. Our Validation Specialists incorporate years of experience in GLP system validation, detailed knowledge of our systems, together with other industry standard systems to help you meet your company's requirements.



Training

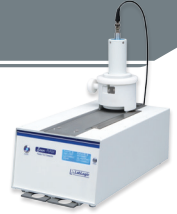
LabLogic can provide a variety of training courses and workshops to help you get the most out of your instrument and software.

All training is performed by our expert Product and Support Specialists who have many years experience in the development and use of the instruments and software.

Certificates can be provided to compliment your internal GLP training records.

Related Products

Scan-RAM™
PET/SPECT radio-TLC Scanner



Flow-RAM™
PET/SPECT radio-HPLC Detector



 **PETra™**
PET LIMS Software

 **Laura for PET™**
PET/SPECT Radiochromatography Instrument Control, Data Collection and Analysis Software

 **Laura™**
Radiochromatography Data Collection and Analysis Software

 **QC Solutions**
The Complete PET Quality Control Service

USA & Canada

LabLogic Systems, Inc.

East Pointe Park, 1040 East Brandon Blvd.
Brandon, FL 33511-5509, USA

E-mail: solutions@lablogic.com

Tel: +1-813-626-6848

Fax: +1-813-620-3708

Web: www.lablogic.com



Certificate No: 10926
ISO 9001

Europe & Worldwide

LabLogic Systems Limited

Paradigm House, 3 Melbourne Avenue
Broomhill, Sheffield, S10 2QJ, UK

E-mail: solutions@lablogic.com

Tel: +44 (0)114 266 7267

Fax: +44 (0)114 266 3944

Web: www.lablogic.com



Certificate No: 1535
ISO 9001



EXPERIENCE & EXPERTISE