



Laura™

Radiochromatography Data
Collection and Analysis Software



v4.2.9.107



EXPERIENCE & EXPERTISE

A new release of Laura v4.2.9.107 is now available

This release was built to add functionality to accommodate the dual use of both manual injector and autosamplers when using Shimadzu Nexera and Prominence systems so has very few new features.

As always the full list of changes is available via the software release notes but I have included details of the main addition in this document.

Addition of functionality to support dual use of manual injector and autosampler

Functionality has been added to support users with Shimadzu Nexera and Prominence HPLC systems who have both Manual injector and Autosampler in the same stack.

Add the batch with a mix of automatic and manual injections.

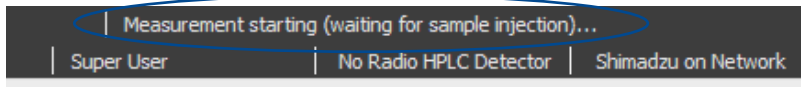
No	Sample Name	Vial No	Injection Volume (µL)	Comment
1	Autosampler	1	10.00	
2	Manual Injector		10.00	
3	Autosampler	3	10.00	

The user simply adds the batch with a mix of automatic and manual injections, manual injections are defined by not having a vial number added.

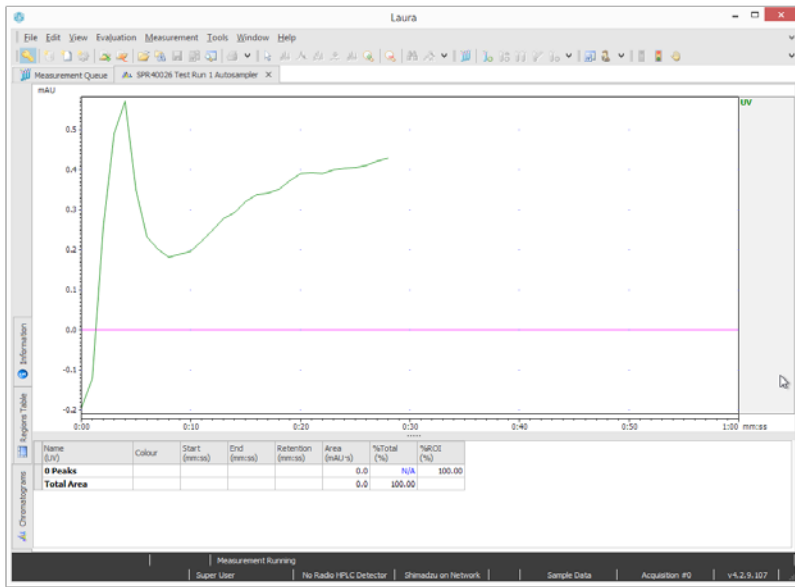
Project Name	Method Name	Gradient Name	Batch Name	Vials	Comment
Sample Data	SPR40026 Test	Isocratic	SPR40026 Test	1,,3	

This is shown in the measurement queue as above.

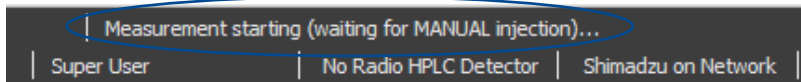
So when the system is waiting for an auto-injection the following message is shown.



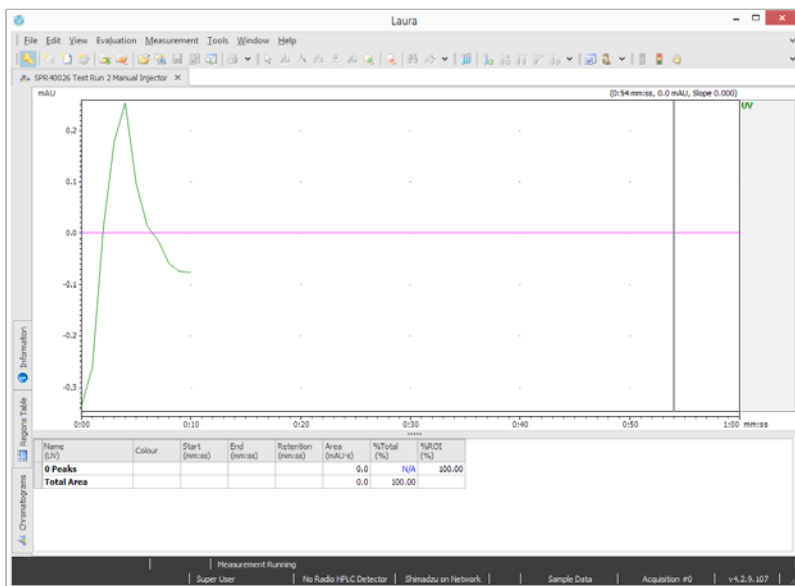
Then the auto-injection has occurred and data acquisition begins.



When the system is waiting for the manual injection to be triggered the following message is shown.



The manual injection is triggered and data acquisition begins.



Europe & Worldwide

LabLogic Systems Limited

Paradigm House, 3 Melbourne Avenue
Broomhill, Sheffield, S10 2QJ, UK

E-mail: solutions@lablogic.com

Tel: +44 (0)114 266 7267

Fax: +44 (0)114 266 3944



Certificate No: 1535
ISO 9001



Certificate No: 1535
ISO 9001



USA & Canada

LabLogic Systems, Inc.

East Pointe Park, 1040 East Brandon Blvd.
Brandon, FL 33511-5509, USA

E-mail: solutions@lablogic.com

Tel: +1-813-626-6848

Fax: +1-813-620-3708



Certificate No: 10926
ISO 9001



EXPERIENCE & EXPERTISE